

Company Profile

Frontline Gold Corp. (TSX-V: FGC) is a Canadian junior mineral exploration company with an experienced discovery team and a proven track record. The flagship property is an advanced stage gold project located in the prolific heart of the West African gold belt in Niaouleni, West Mali with all the indicators of a major gold discovery. Frontline also has ongoing exploration projects located in Turkey, British Columbia, and Ontario.

Menderes Permit Information

- Total land package held under 4 permits is 6,194 ha (62km²)
- Potential to host low-sulphidation epithermal vein gold systems all contiguous to Eldorado Gold's nearby 2,262ha Efemçukuru operating mine—contains P&P Reserve of 1.5M Au @ 9.10 g/t and M&I Resource of 1.7M Au @ 9.55 g/t
- Site access is via local paved roads from the coast, 20kms from provincial capital of Izmir

Share Capital

Cash Position (pending financing) C\$0.75 M
Issued and Outstanding: 94.5M
Warrants: 24.6M
Options: 8.4M
Fully Diluted: 125.5M

Management & Directors

Walter Henry, CFA ICD.D
 President & CEO, Director

Gregory Isenor, P.Geo.
 VP of Exploration, Director

John Cumming, LLB, LLM
 Executive VP & General Counsel, Director

Jim Patterson, Ph.D.
 Director

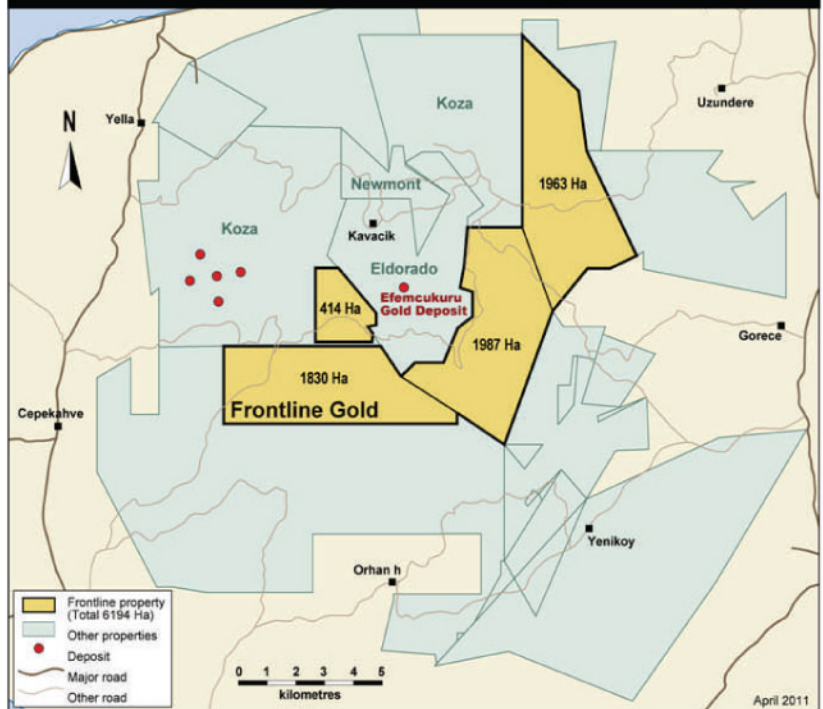
Darryl Sittler, ICD.D
 Director

Tom Hussey, C.A
 Director

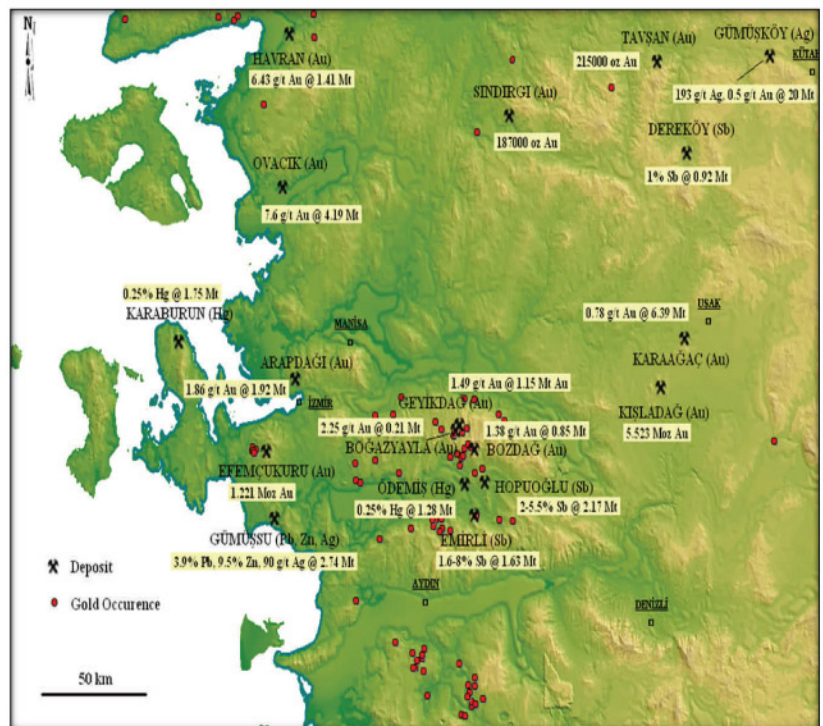
Contact Us

Suite 1102, 67 Yonge Street
 Toronto, Ontario M5E 1J8
 Tel: 416.362.9100
 Fax: 416.362.9300
 info@frontlinegold.com

Menderes Permit Map



FRONTLINE GOLD
Menderes Project
 Izmir Province, Turkey
Permit Map



Menderes Project & Permit Details

- Frontline, through its 90% owned Turkish subsidiary, holds 6,194 ha (62 km²). The remaining 10% of Frontline's Turkish subsidiary is owned by Aegean Gold Madencilik Ltd. Şti.
- Frontline has a strategic alliance with Aegean for acquisition & exploration of Turkish mineral concessions
- 2 permits subject to 2% NSR - 50% to be acquired from \$1M
- All FGC landholdings contiguous to Eldorado Gold Corp's nearby 2,262 ha *Efemçukuru* project

2011 Work Summary—Menderes

- \$500k Exploration Program in 2011
- Initial work consists of geological research, data compilation, prospecting, sampling, trenching & pitting, mapping, assaying, and report preparation
- Geochemical sampling has been completed over a 5 km² area, with 1,360 soil samples and 98 rock chip samples collected since March 2011.
- 2 IP anomalies have been identified and correlate with the geochemical samples.
- Drilling permit received Nov 1, 2011
- Proposed up to 2,500m drill program over 8 holes
- Drilling to commence early December 2011
- Follow-up recent interest received for potential joint venture

Eldorado Gold announces on June 30, 2011:

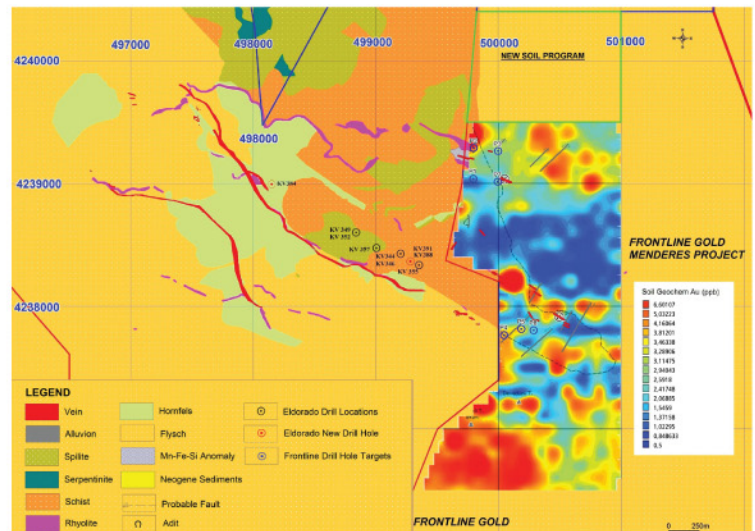
- At Efemçukuru, 7,500 meters of drilling is planned on the Kestane Beleni and Kokarpinar veins.
- Drilling on the Kestane Beleni vein will focus on the northwest extension, where a gold-in-soil anomaly lies along strike from the North Ore Shoot. Despite the close proximity to the Efemçukuru ore bodies, previous drilling of this promising target is limited to only two shallow drillholes.
- At full production, Efemçukuru will produce 120,000 ozs of gold/yr.

Kokarpinar vein drill hole intersections 2009–2010

Hole ID	From (m)	To (m)	Interval (m)	Avg. gr. Au	Ag (g/t)	Pb (%)	Zn (%)
KV-344	230.1	232.55	2.45	1.90	11.5	0.1	0.3
KV-346 Incl.	257.0 258.8 s	260.7 259.6	3.70 0.72	11.08 39.10	7.7 18.4	0.3 0.3	0.6 0.5
KV-348 and	293.1 0 299.2 s	294.10 300.85	1.00 1.40	2.88 5.79	4.1 56.6	0.1 1.7	0.1 4.2
KV-349	287.2	288.24	1.00	7.23	5.8	1.1	0.6
KV-352 and	121.35 178.80	122.64 179.25	1.29 0.45	1.16 0.75	25.1 70.0	3.4 8.3	3.5 3.0
KV-355 and	246.6 0 303.2 0	247.22 306.30	0.62 3.10	18.80 12.02	22.2 10.4	0.5 -	0.7 -
KV-357 and	298.10 315.80 324.80	301.67 317.80 325.91	3.57 2.00 1.11	.02 .07 .05	6.5 22.7 22.1	1.1 2.8 1.9	0.9 5.3 3.9

Source: Eldorado Gold Corporation, June 17, 2010 – "Eldorado Exploration Programs Update".

Geochem Map



Menderes Geology

- Au mineralization contained in steeply dipping vein structures of quartz & quartz-rhodonite hosted by altered hornfelds and phyllites. Au is fine grained, occurring as free grains in quartz & rhodonite gangue and locked in grains of pyrite, chalcocopyrite and sphalerite.

IP Chargability Map

