

Company Profile

Frontline Gold Corp. (FGC:TSX-V) is a Canadian junior mineral exploration company with an experienced discovery team and a proven track record. The flagship property is an advanced stage gold project located in the heart of the prolific West African gold belt in Niaouleni, West Mali with all the indicators of a major gold discovery. Frontline also has gold properties in Turkey, British Columbia, and Ontario.

Share Capital

Cash Position (Apr 15, 2011): C\$.75 MM

Issued and Outstanding: 83.4MM
Warrants: 23.3MM
Options: 6.8MM
Fully Diluted: 113.5MM

Management & Directors

Walter Henry, CFA ICD.D

President & CEO, Director

Gregory Isenor, P.Geo.

Vice President of Exploration, Director

John Cumming, LLB, LLM

Executive VP & General Counsel, Director

Jim Patterson, Ph.D.

Director

Darryl Sittler, ICD.D

Director

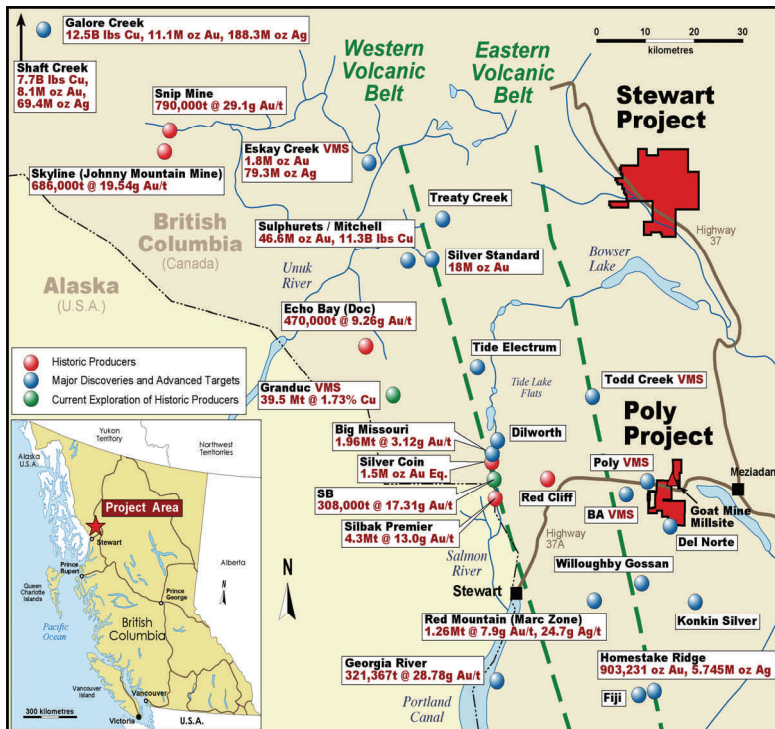
Contact Us

Suite 802—1550 Bedford Highway
 Bedford, Nova Scotia B4A 1E6
 Tel: 902.832.5555
 Fax: 902.832.2223
 Email: info@frontlinegold.com

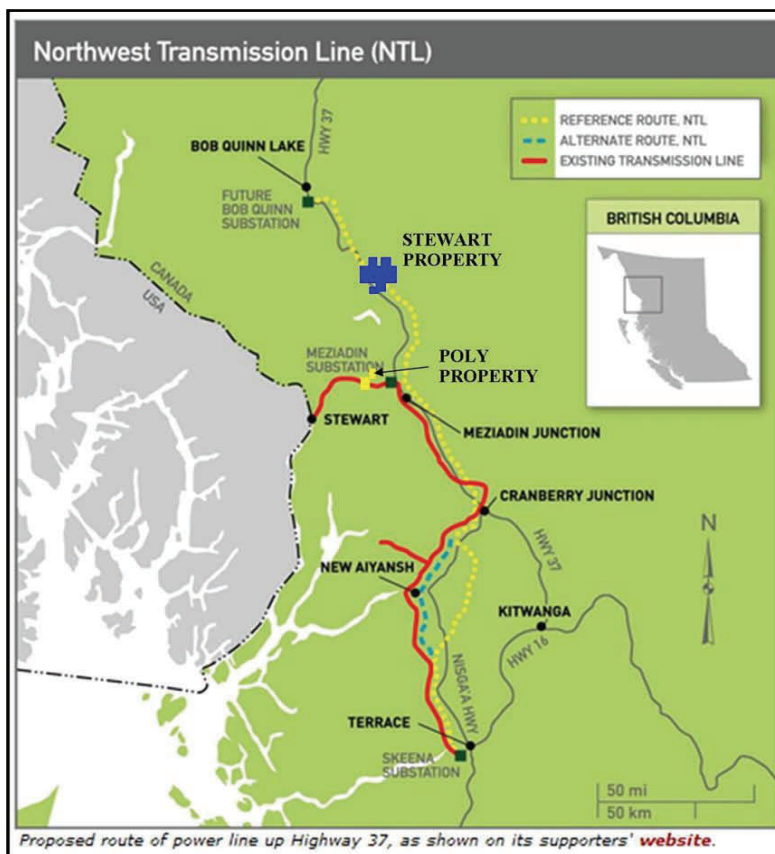
Poly & Stewart Project Information

- Evolving world-class Au camp with a year round, ice free seaport hosting one of world's largest undeveloped Au-Cu porphyry deposits (Seabridge's KSM; Pretium's Snowfield Deposit: Over 80 M oz of Au, 250 M oz Ag, 12.5 B lbs Cu)
- One of the world's richest Kuroko type VMS precious metal deposits (Barrick's historic Eskay Creek Mine)
- Besshi Type VMS Cu mineralization (Newmont's historic Granduc Mine) currently being re-developed by Castle Resources

British Columbia Poly & Stewart Projects



Poly & Stewart Project Area



POLY PROJECT DETAILS

- Located on Stewart Hwy 37A, bisected by Stewart Power Line
- In recently discovered, expanding VMS corridor hosted by Hazelton volcanics and associated with a number of felsic intrusions
- Contiguous with Mountain Boy Minerals and Great Bear Resources Mineral Tenures that host the BA Ag-Pb-Zn VMS deposit
- Contiguous with Teuton/Sabina Tenures that host the Del Norte VMS trend

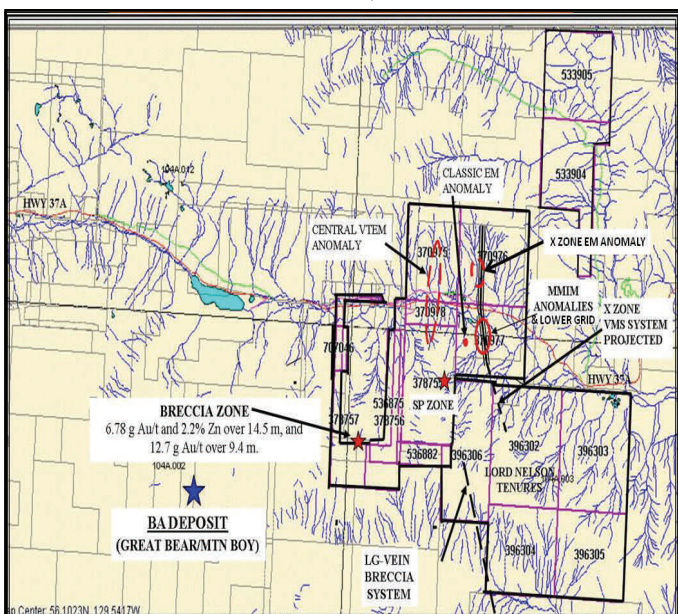
POLY EXPLORATION TARGET

- Eskay Creek type precious metal VMS
- X Zone VSM Horizon with associated classic zoned VMS MMI-M soil geochemical signature open to northwest on the Lower Grid
- Recently delineated VMS type EM anomalies on west flank of MMI-M anomaly; evidence of stacked exhalative horizons
- Waning glacier has recently exposed the large SP Gossan Zone on trend of Central Zone of EM anomalies
- Property recently expanded to 57 square kilometres to include S. extension of target area (Lord Nelson Tenures)

POLY 2011 EXPLORATION PROGRAM

- Evaluate Lord Nelson Tenures with VTEM survey
- Fully delineate MMI-M anomaly on Lower Grid
- Evaluate EM anomalies and SP Gossan Zone
- Prioritize drill targets and test with 1,500 m of drilling

PROJECTION OF MINERALIZED TRENDS/SHOWINGS & VTEM ANOMALIES, POLY PROJECT



STEWART PROJECT DETAILS

- Located on Hwy 37, along which the Northwest Power Line will be built to the KSM deposit.
- Covers recently discovered inlier of Hazelton Group rocks on Oweege Dome with felsic stratigraphy and felsic intrusions
- Contiguous with Seabridge KSM Property

STEWART EXPLORATION TARGET

- KSM Type Au-Cu porphyry deposits; Kuroko type VMS
- Large Au-Cu porphyry target area including Deltaic, Northwest, Bear Valley Zones associated with alteration zones in vicinity of apophyses of Delta Intrusion
- Waning glacier has recently exposed large area of pyroclastic rocks which are in fault contact with underlying target zones on Upper Deltaic Grid
- VTEM survey recently delineated EM anomalies with magnetic association
- Stratabound Zn +/- Ag, Cu drill targets near Highway 37 on Delta West Grid
- Property recently expanded to 293 square kilometres to include the Northwest Extension of the favourable environment

STEWART 2011 EXPLORATION PROGRAM

- Follow up VTEM anomalies with geology, geochemical surveys
- Expand IP coverage to prioritize drill targets on Delta West Grid
- Map extent of Au-Cu porphyry environment on Upper Delta Grid
- Prioritize all drill targets and test with 1,500 m of drilling

STEWART PROPERTY TENURES AND AU-CU PORPHYRY, VMS TARGETS

