



*Whitehorse Island
Property Overview*

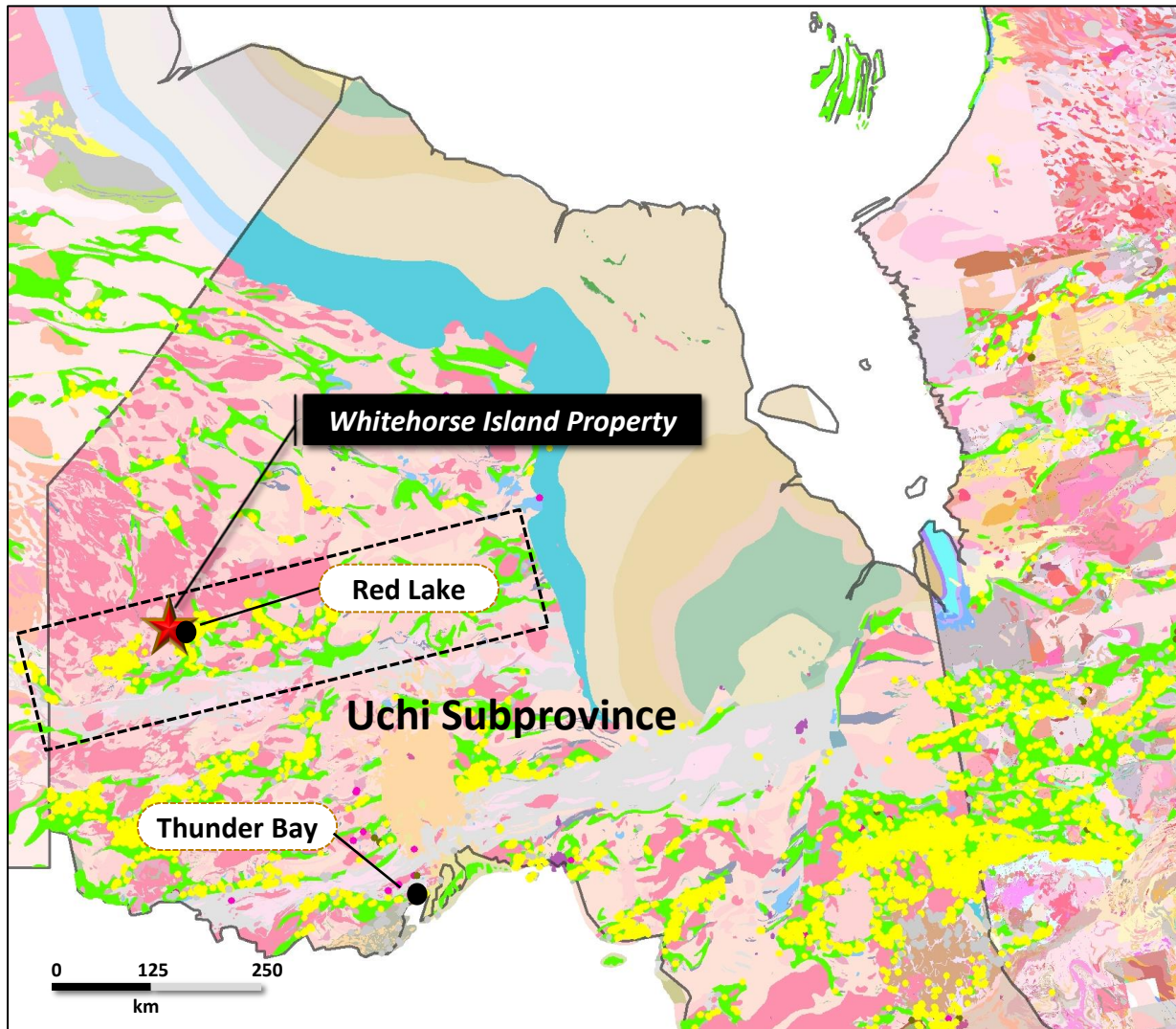
Red Lake, Ontario

- The Whitehorse Island property consists of two patented claims covering 27.9 hectares
- The property is located within the Red Lake Gold Camp only 2.5km north of the town of Red Lake. Historic production and resources within the Red Lake Gold Camp totals 41M ounces of gold.
- The Sanshaw Shaft was sunk on the property (Orlac Deposit) to a depth of 139m with two levels established with 690m of lateral development.
- A resource estimate circa 1958 stands at 159,000 tonnes at 6.22 g/t Au.
- Whitehorse Island lies along the East Bay Deformation Zone which hosts both the Campbell gold mine and the Phoenix gold mine.
- Located in the 'shadow' of head frames, the Whitehorse Island property is strategically situated within one of the most prolific gold camps in the world.


Regional Location



Metal Occurrences of the Superior Province



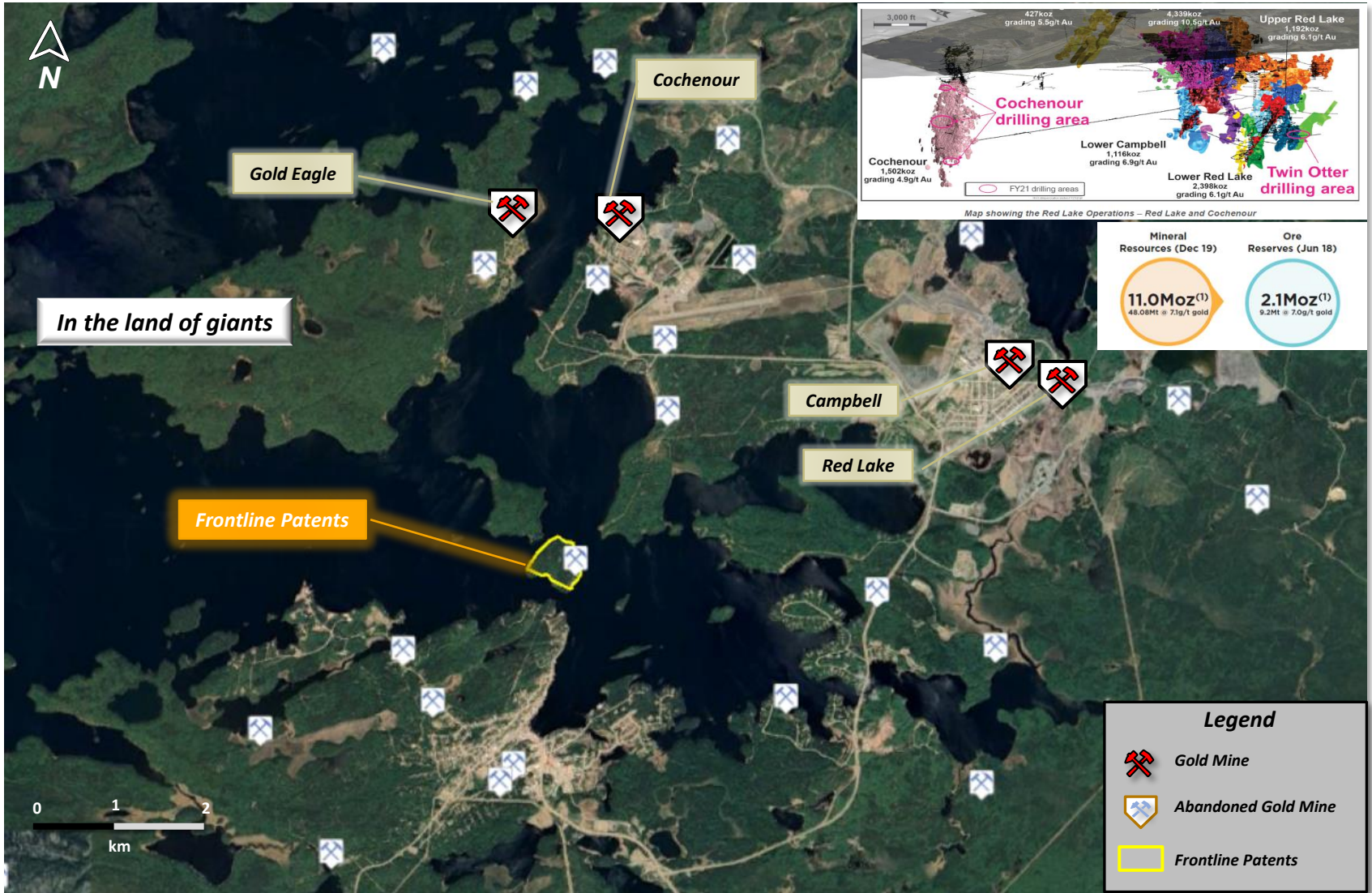
- The Whitehorse Island Property is situated within the prolific Red Lake Gold Camp. Past production and current resources for the Red Lake area mines totals 41 million ounces of gold.

 Precious Metal Occurrences of Ontario/Quebec

Regional Location and Access



Producers and Past Producers



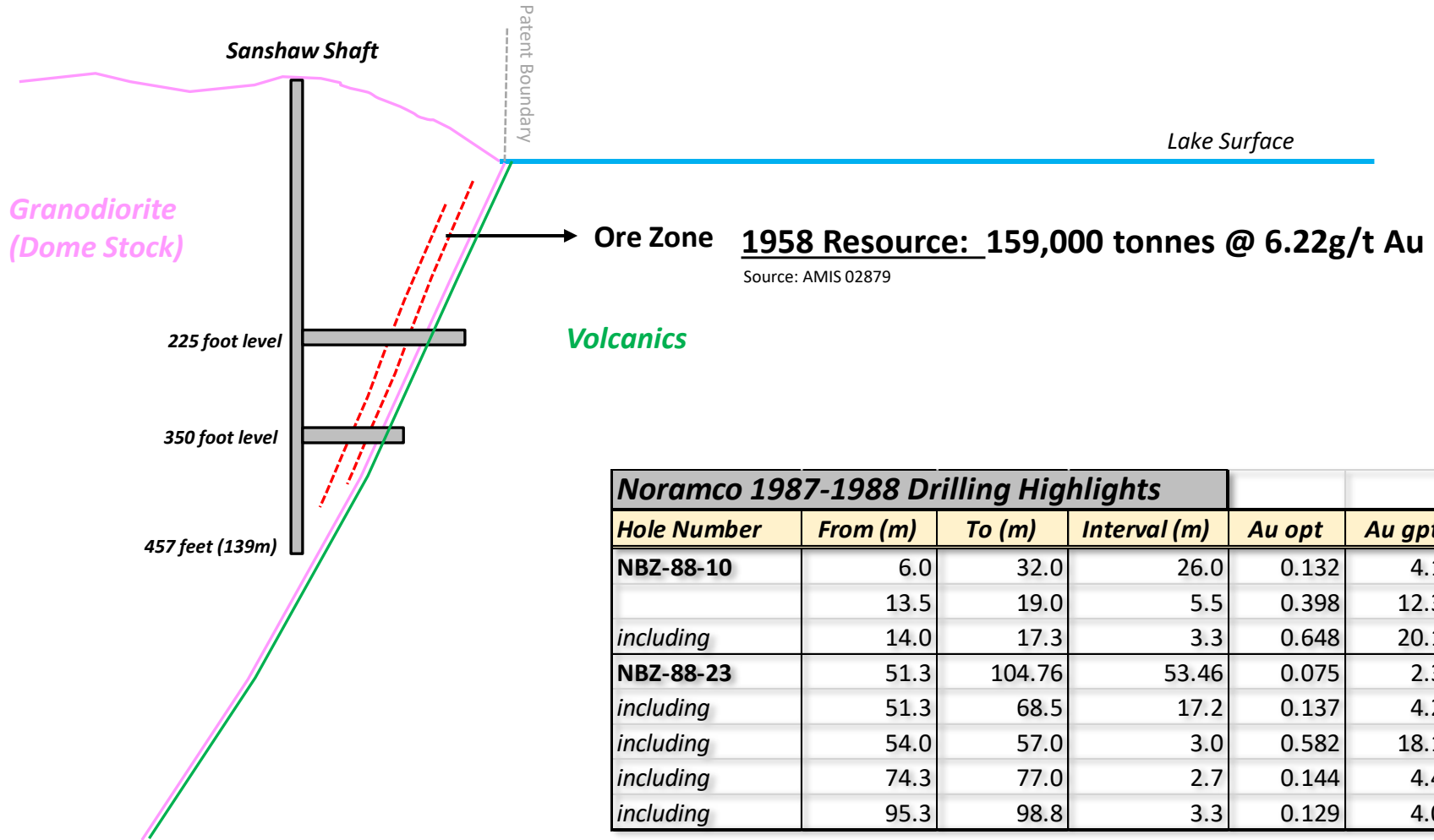
Red Lake Gold Mines and Structural Corridors



Schematic Cross Section of the Ore Zone

W

E



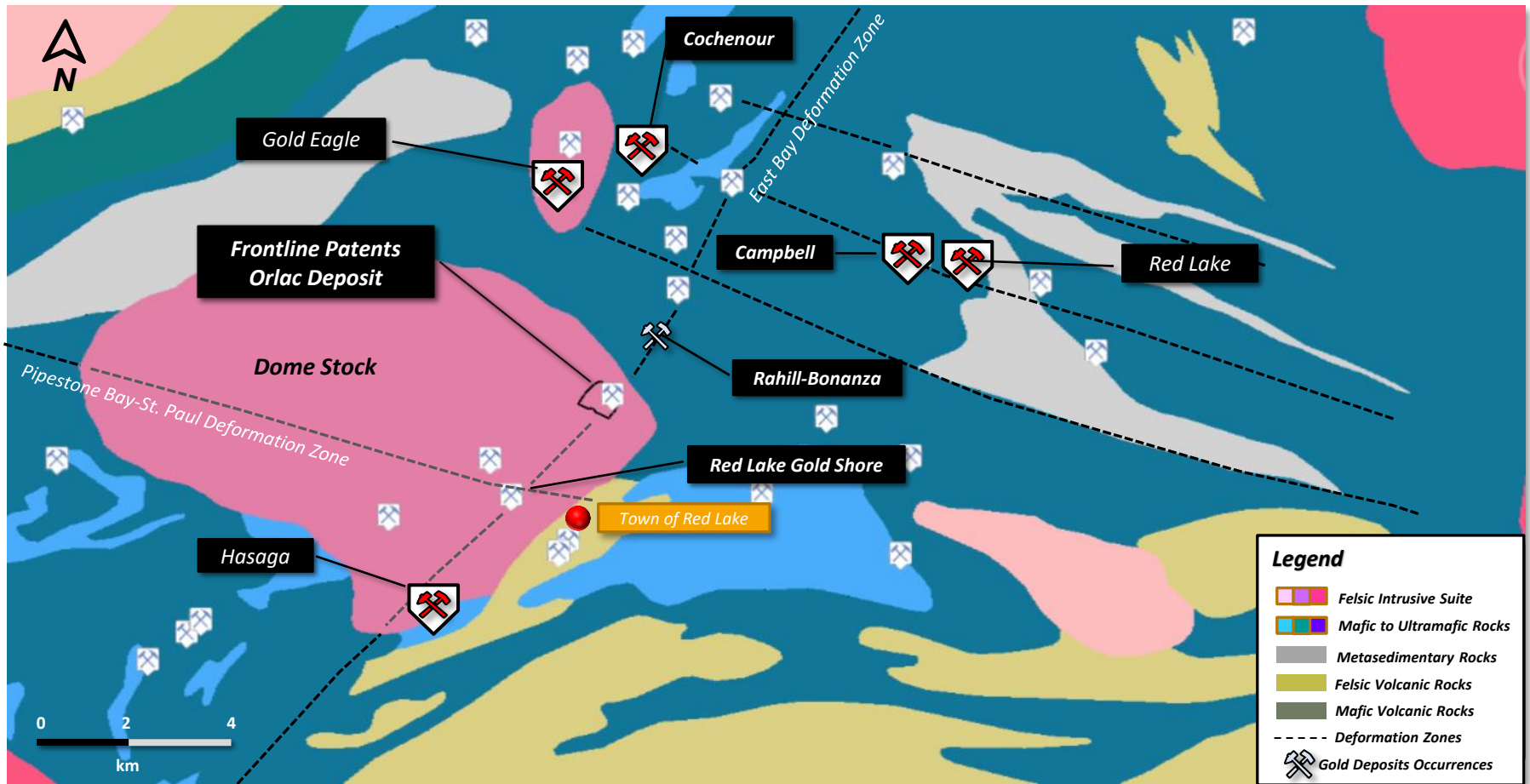
Noramco 1987-1988 Drilling Highlights					
Hole Number	From (m)	To (m)	Interval (m)	Au opt	Au gpt
NBZ-88-10	6.0	32.0	26.0	0.132	4.11
	13.5	19.0	5.5	0.398	12.38
<i>including</i>	14.0	17.3	3.3	0.648	20.15
NBZ-88-23	51.3	104.76	53.46	0.075	2.33
<i>including</i>	51.3	68.5	17.2	0.137	4.26
<i>including</i>	54.0	57.0	3.0	0.582	18.10
<i>including</i>	74.3	77.0	2.7	0.144	4.48
<i>including</i>	95.3	98.8	3.3	0.129	4.01

Source: AFRI 52N04SW2074

Looking North

Not to scale

Regional Geology



➤ The Whitehorse Island mine is not the only former mine within the Dome Stock