



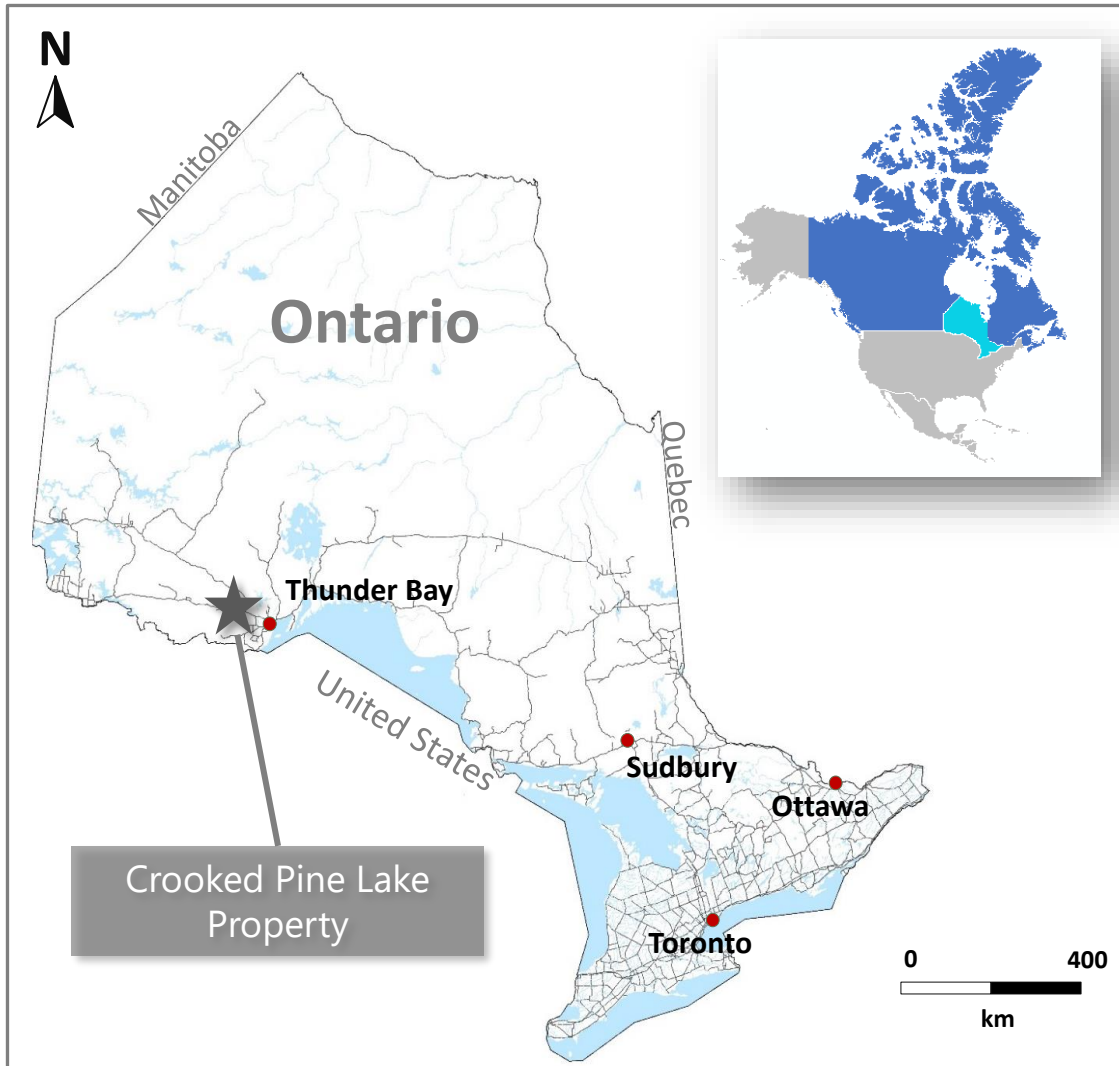
*Crooked Pine Lake  
Property Overview*

*Atikokan, Ontario*

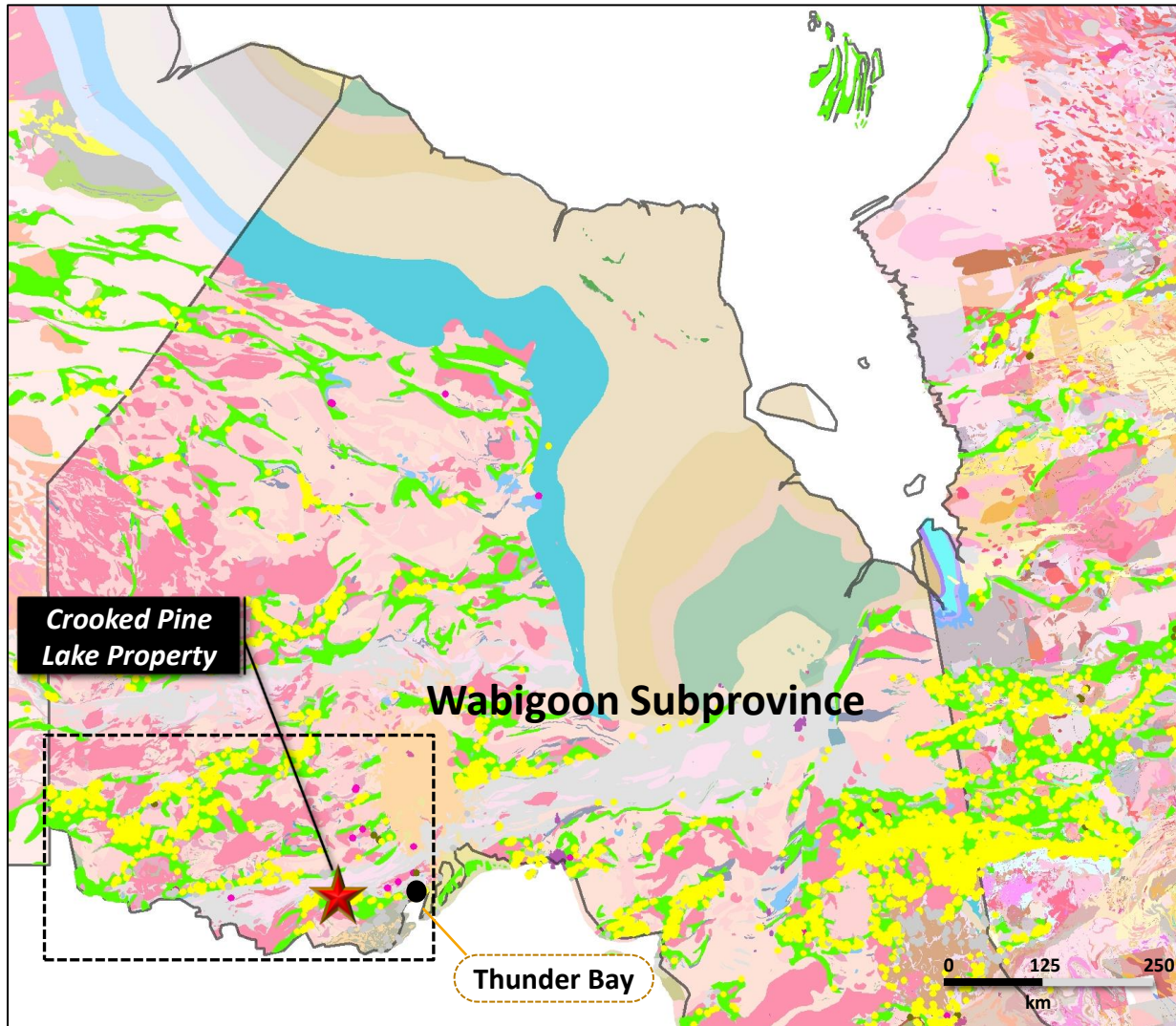
# Property Summary

- The Crooked Pine Lake Property consists of 8 mining claims and 113 mining cells totaling 5,703 hectares.
- The property is strategically located just north of the Trans Canada Highway and is serviced by active logging roads with nearby power and natural gas lines.
- The property is hosted within the Wabigoon Subprovince increasingly recognized for its metal endowment (Hammond Reef, Cameron Lake, Rainy River).
- Located along the Quetico Fault, the Crooked Pine Lake hosts northeast trending second order structures that control regional gold mineralization. These are similar trending structures that host 5 million ounces of gold in the Agnico Eagle Hammond Reef Deposit and Traxx Resources Northwestern Ontario Prospectors 2017 Discovery of the Year Award with a grab sample of 1280 g/t gold.
- Sampling along the northeast trending X656 Shear Zone in 2020 yielded grab sample results of up to 19.2 g/t Au.
- The acquisition of the Pothole claims with a 1963 channel sample of 9.33 g/t Au over 2.74m and 2003 grab samples of up to 11.52 g/t Au enhances the merit of the property.
- Excellent location, nearby infrastructure and access.

# Regional Location



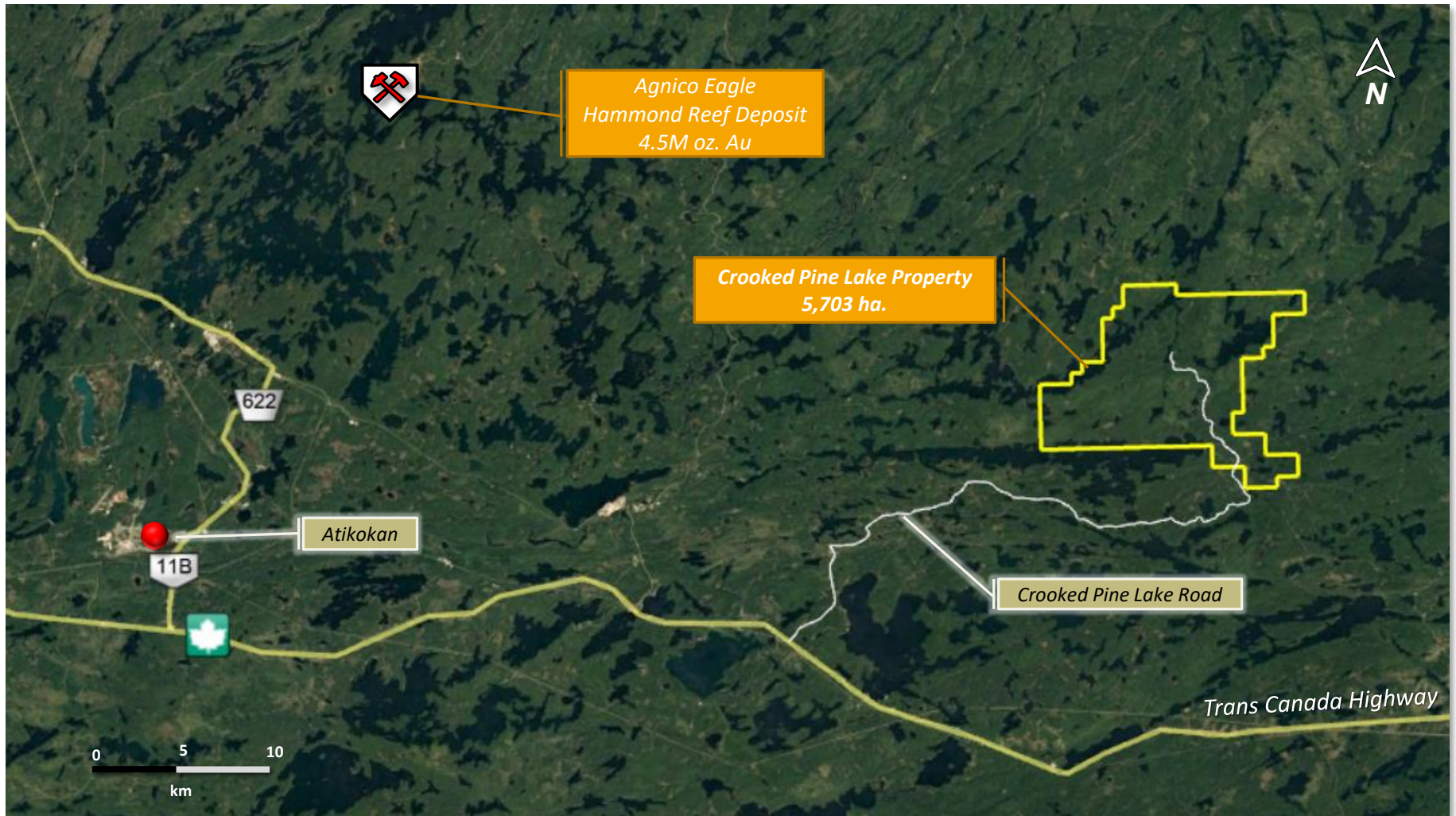
# Northwestern Ontario Precious Metals



- The Crooked Pine Lake Property is situated within the Marmion Subprovince which has been recently recognized for its metal endowment hosting the Hammond Reef gold deposit (Agnico-Eagle) of 4.5 million ounces of gold.

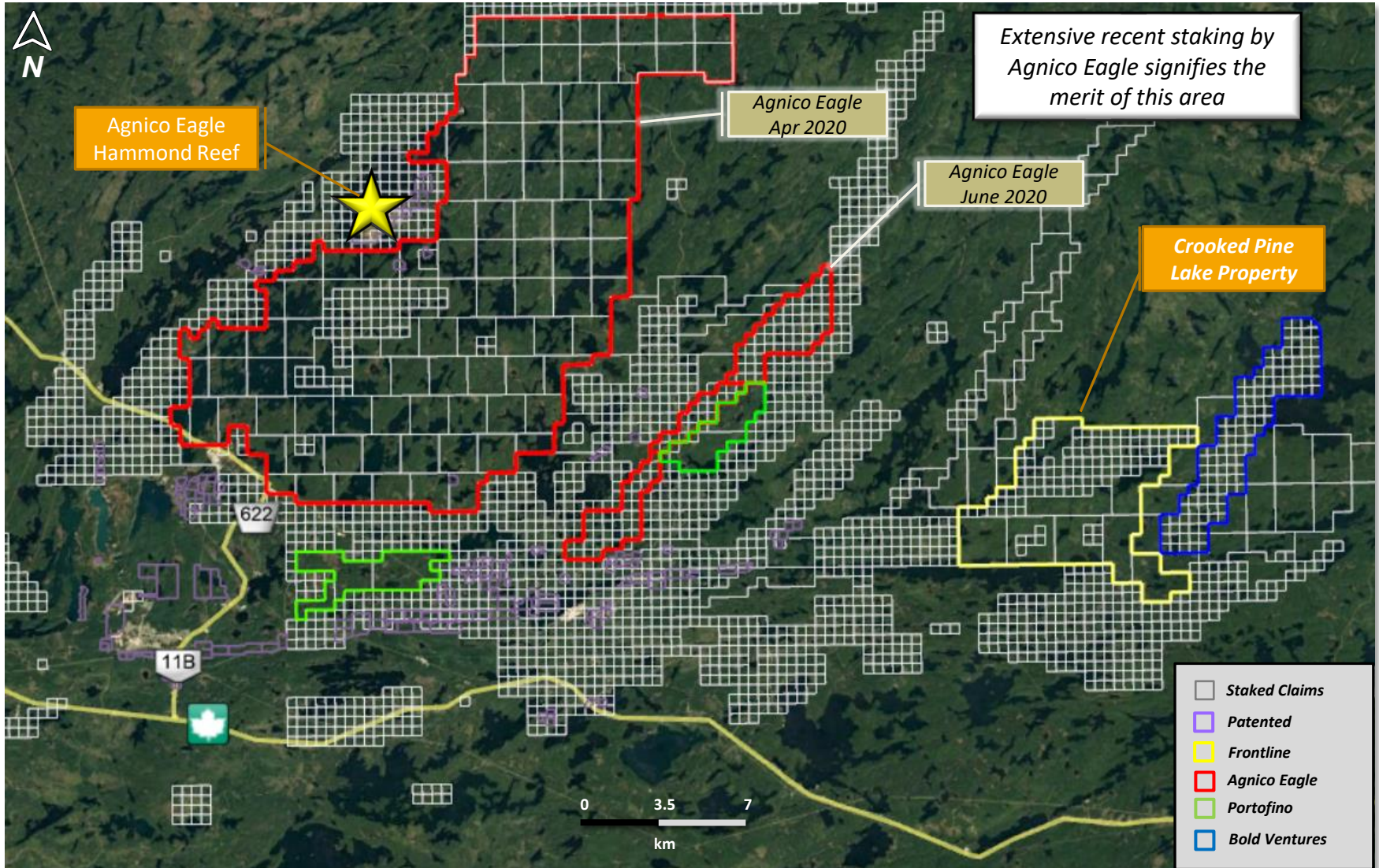
- Precious Metal Occurrences of Ontario/Quebec

# Regional Location and Access

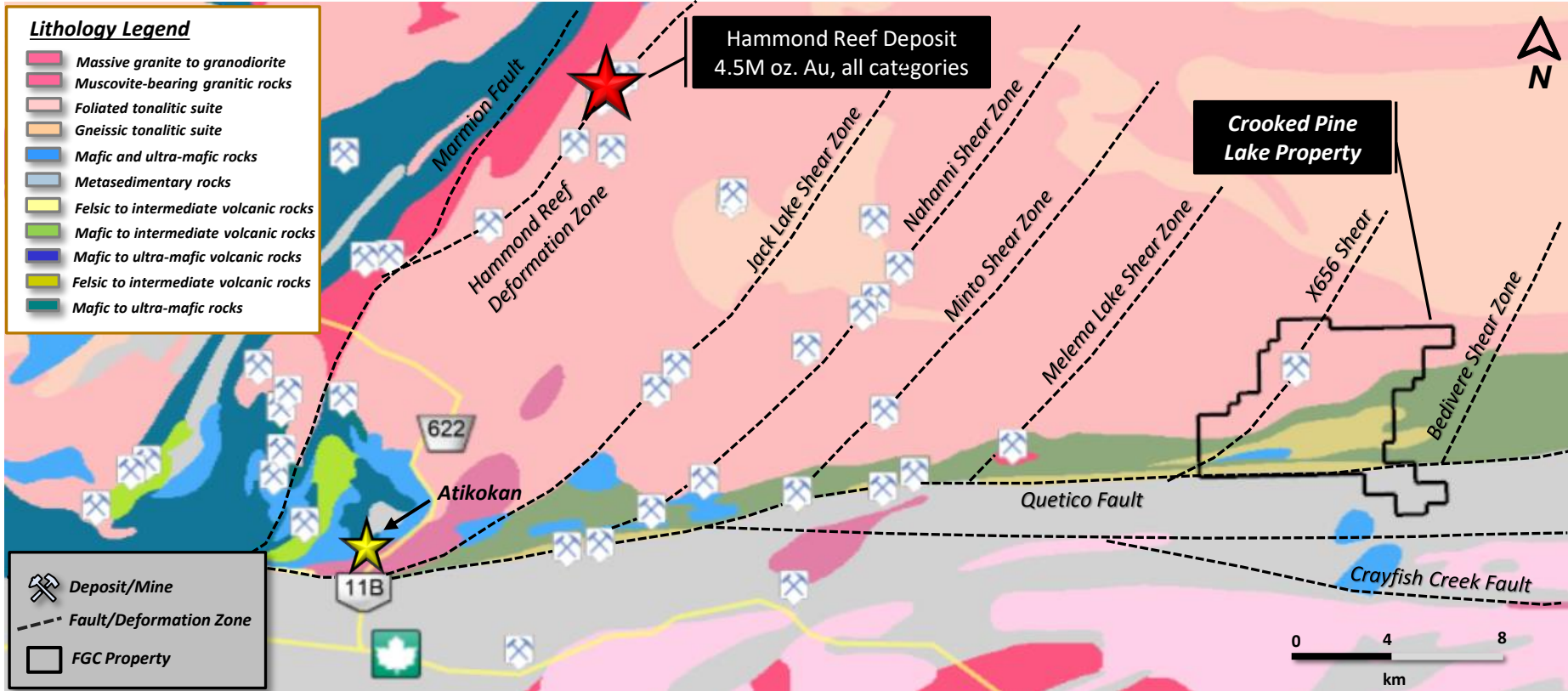


➤ Excellent road access and nearby infrastructure

# Recent Area Staking and Claim Fabric

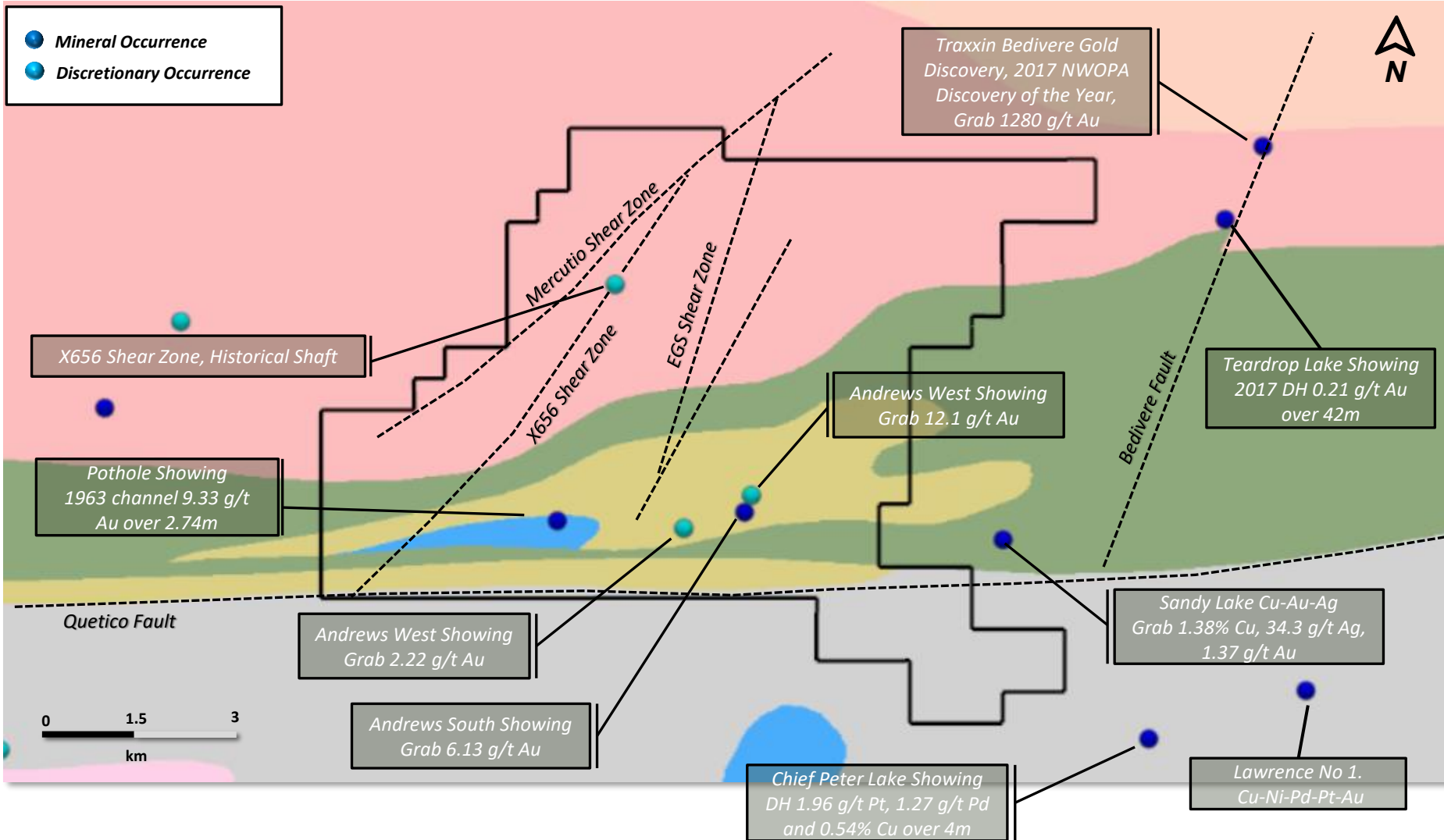


# Regional Geology, Current and Historic Deposits



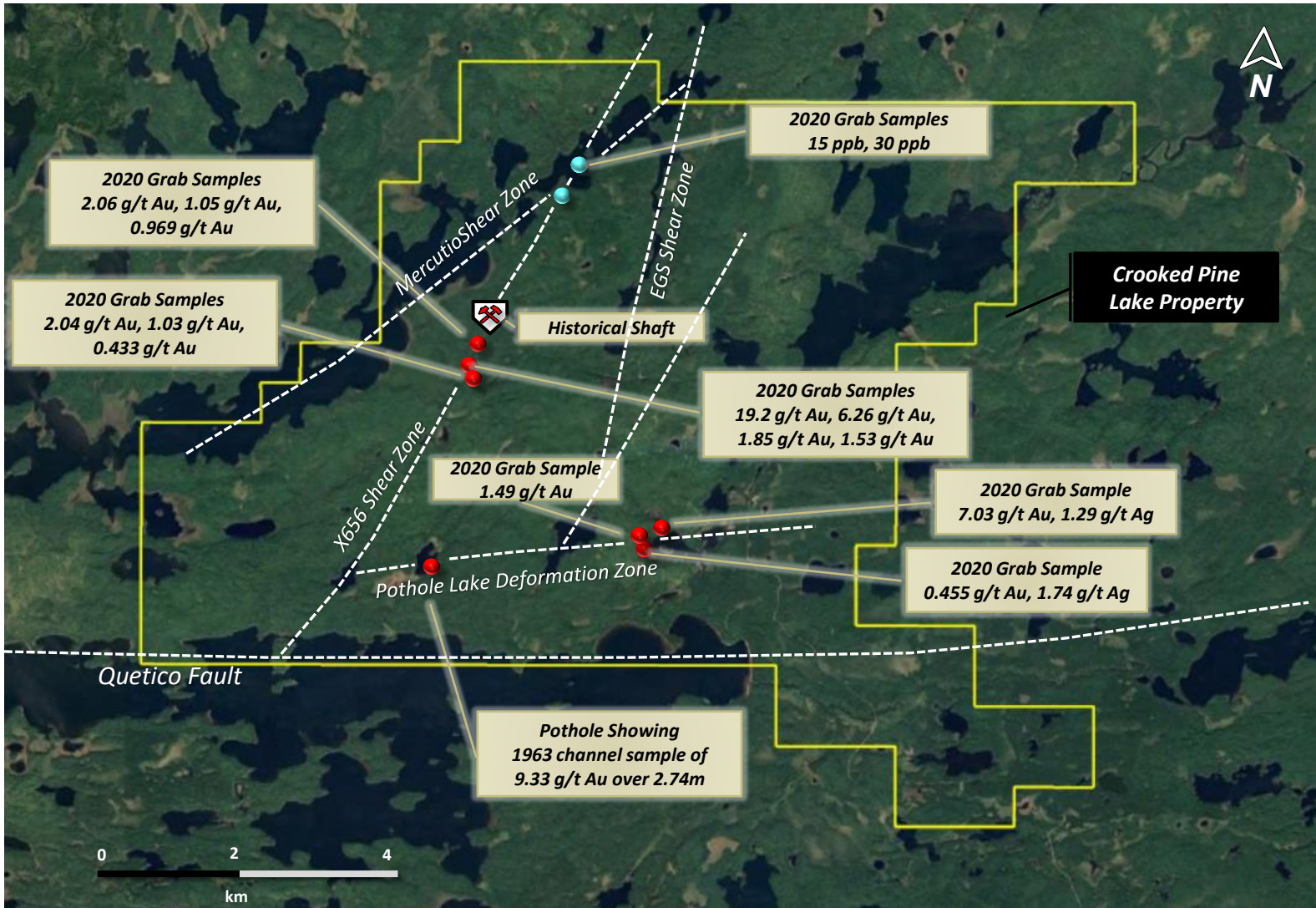
- The Crooked Pine Lake Property is located along the Quetico Fault and hosts the X656 Shear Zone, an important regional northeast trending structure prominent for gold deposits in the region.

# Registered Mineral Occurrences

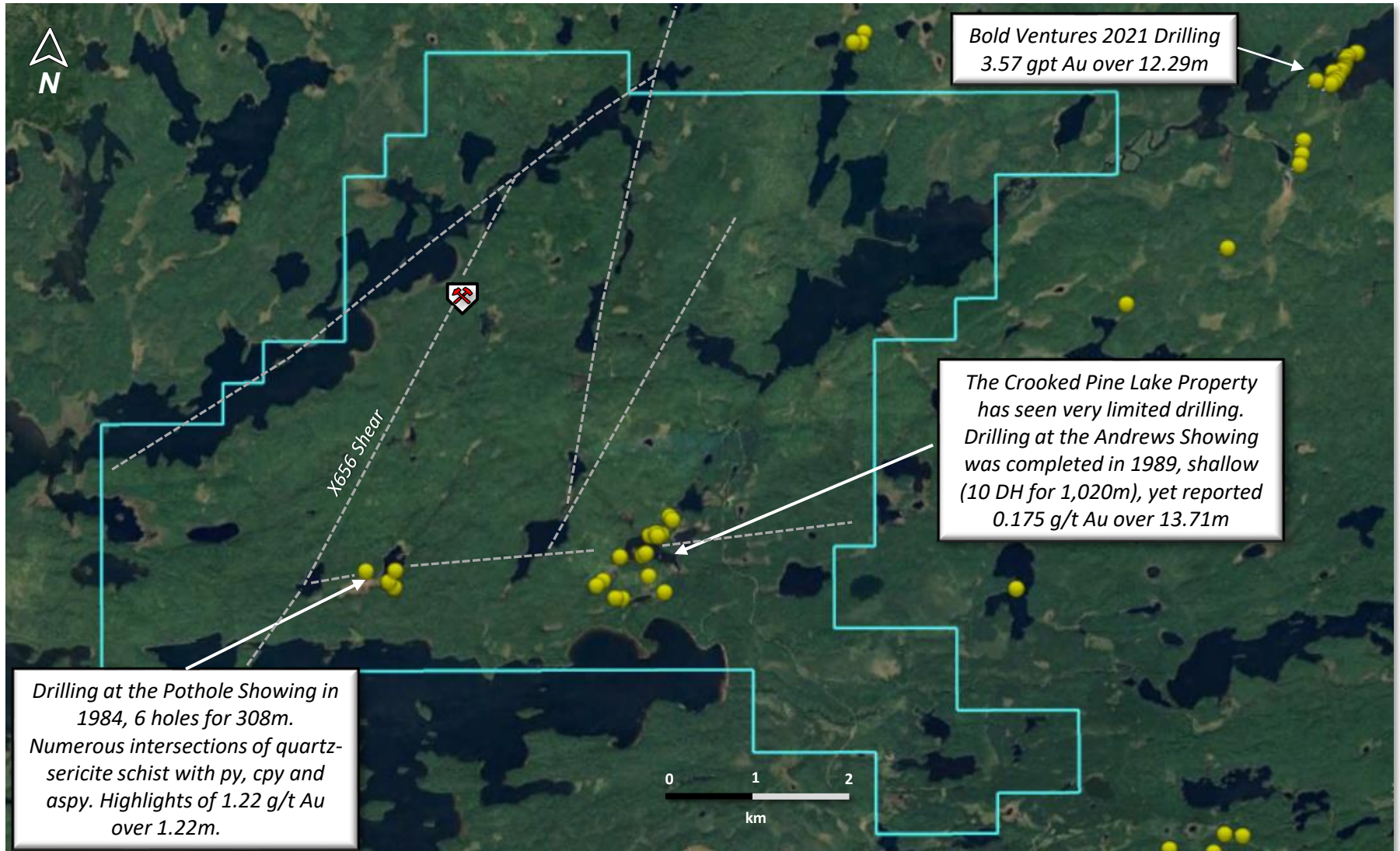




# 2020 Sampling Program Results



# Historical Drilling...none since 1989



# 2021 High-resolution Heli-borne Magnetic Survey

