



Emerald Geological Services

In Conjunction with
Frontline Gold Corporation (TSX-V:FGC)



Bruce MacLachlan
bruce@emeraldgeologicalservices.com

(705) 266-0847

Walter Henry
info@frontlinegold.com
(416) 861-9090
(416) 414-5825

Epworth Cu-Zn-Pb-Ag-Au-Co Property, Nunavut (FGC – EGS Property)

- ❖ Portion of former Noranda Property.
- ❖ Analogous to:
 - a) Cu-Co-Ag stratiform/stratabound vein/disseminated deposits in African Copperbelt.
 - b) Mississippi Valley Type (MVT) sediment-hosted Pb-Zn-(Cu) deposits.
 - c) Hydrothermal Au deposits.
- ❖ 2021-2022 field programs: rocks up to **37.8% Cu, 27.4% Zn, 16.7% Pb, 1100 ppm Ag, 3.01 gpt Au, 1700 ppm Co** along 1.15 km high-grade polymetallic trend ('**Metallic Trend**').
- ❖ Soil Samples up to **2970 ppm Cu, 2710 ppm Zn, 2010 ppm Pb, 8.6 ppm Ag, 99 ppb Au, 127 ppm Co.**

- ❖ Anomalous Zn-Pb-Cu mineralization along 2.8 km strike length ('Extended Metallic Trend').
- ❖ New Showing (Northeast Showing) in NE part of property, up to **19.4% Pb, 0.77% Cu, 0.32% Zn.**
- ❖ At least 4 parallel mineralized zones on property, probably single horizon repeated by folding / thrust faulting.
- ❖ Historical grades up to **61.2% Cu & 5600gpt Ag** in south part of property (yet to be revisited).
- ❖ Part of 75 km+ mineralized system.
- ❖ Only 3 historical DDH within property boundary, totaling < 150 m.
- ❖ ~520 km N of Yellowknife; ~70 km from tidewater; ~85 km southeast of Kugluktuk (Coppermine).

Massive chalcocite, high-grade Cu, Ag



61.2% Cu, 5600gpt Ag, southern part of Property (yet to be revisited).

Metallic Showing (N end of Metallic Trend), look SE. Up to 19.2% Zn, 10% Pb, 3.01% Cu, 1100 ppm Ag, 1.86 gpt Au.



Epworth Property location relative to Yellowknife and known deposits



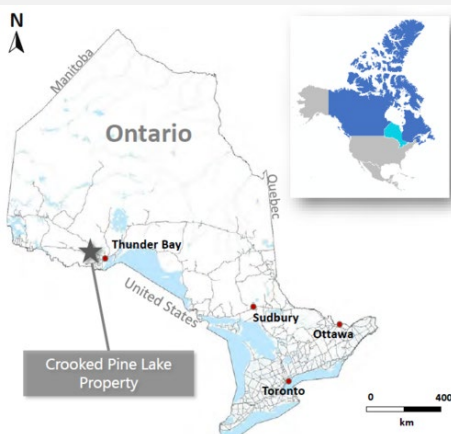
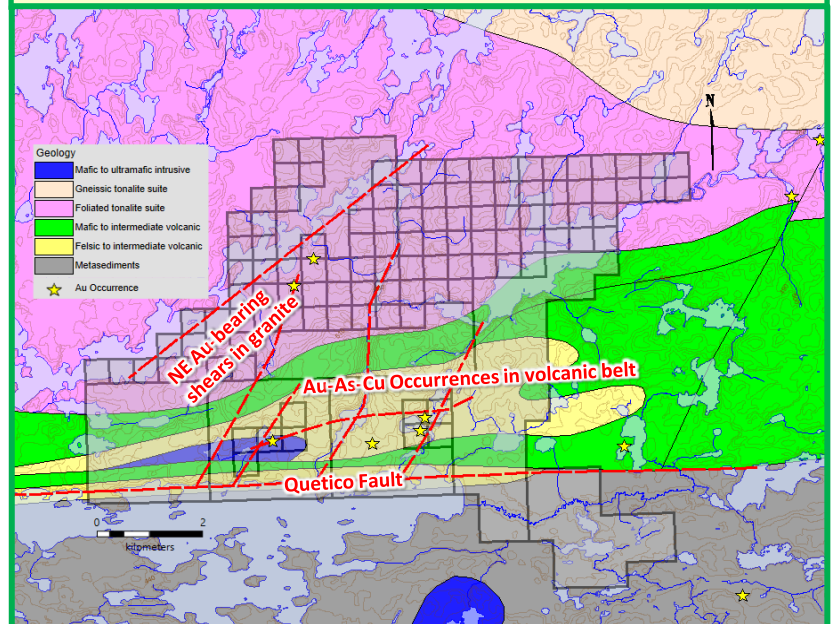
Epworth Property Geology

- ❖ Coronation Supergroup – Early Proterozoic platform-type clastic-carbonate sequence.
- ❖ Sub-basin on eastern flank of rift environment.
- ❖ Deformed (NNW-trending folds and thrust faults) by closure of rift basin.
- ❖ Odjick Formation – Basal clastic unit: shales, siltstones, quartzites & dolomites.
- ❖ Rocknest Formation – Overlies Odjick Formation: Stromatolitic, argillaceous dolomites and shales.
- ❖ Basinal scale redox front.
- ❖ Mineralization related to redox boundaries at Rocknest-Odjick contact, as well as faults and collapse breccia.

Crooked Pine Au Property (FGC)

- ❖ Up to **19.2 gpt Au** within NE-trending shear in granite (thought to be splay off E-W Quetico Fault), similar model to Agnico Eagle's Hammond Reef Deposit 30km to the WNW (3.3 Moz at 0.84 gpt Au probable, plus 2.3 Moz measured and indicated at 0.53-0.54 gpt Au).
- ❖ Up to **12.1 gpt Au** historically in ~E-W shears in southern volcanic belt, crosscut by NE splays from Quetico Fault. Also up to **9.38 gpt Au / 2.74 m** at historical 'Pothole Occurrence.'
- ❖ 2020-2022 field programs focused on rock and soil sampling, next steps are to follow up on anomalous soils and carry out trenching / DDH on known showings.

Crooked Pine Property Geology and Au Occurrences



135 km WNW of Thunder Bay

2020 grab sample at historical Andrews North Occurrence, 7.03 gpt Au from quartz vein with arsenopyrite stringers

