



# *Flint Lake Property Overview*

*Sioux Narrows,  
Ontario*

---

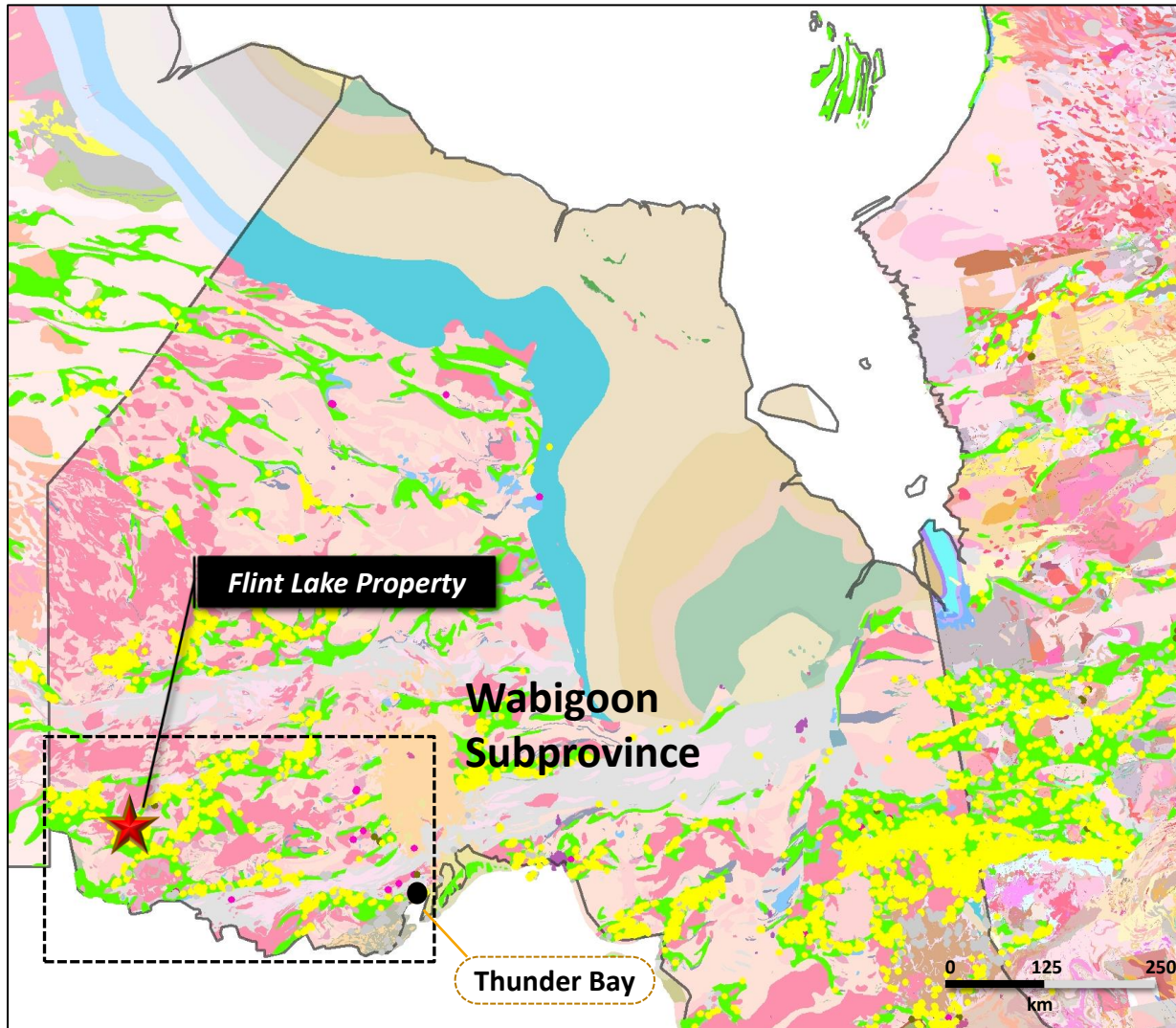
# Property Summary

- The Flint Lake Property consists of 2 claim groups (Flint Lake and Jessie Lake) totaling 605 hectares. There is currently \$300,000 in banked credits on the Flint Lake claim group.
- Both properties are contiguous with First Mining Gold and their Cameron Lake Gold Project which hosts 12,100,000 tonnes containing 1,000,000 ounces of gold.
- The Flint Lake property lies along the Pipestone-Cameron Lake deformation corridor, a regional crustal scale fault zone that extends for over 75km in the Wabigoon Subprovince
- The Wabigoon Subprovince hosts three relatively new gold deposits. The Cameron Lake Gold Deposit of First Mining Gold, the Goliath Gold Complex of Treasury Metals and the newly producing Rainy River Gold Mine of New Gold Inc.
- The Flint Lake area is 'littered' with gold showings with several nearby gold deposits with resources.
- The Flint Lake Property hosts the Sewell gold showing where grabs across 13.7m attained values up to 26.1 gpt Au and the Meahan gold showing where grabs have been reported up to 60 gpt Au
- The properties have good access via logging roads and waterways.

# Regional Location



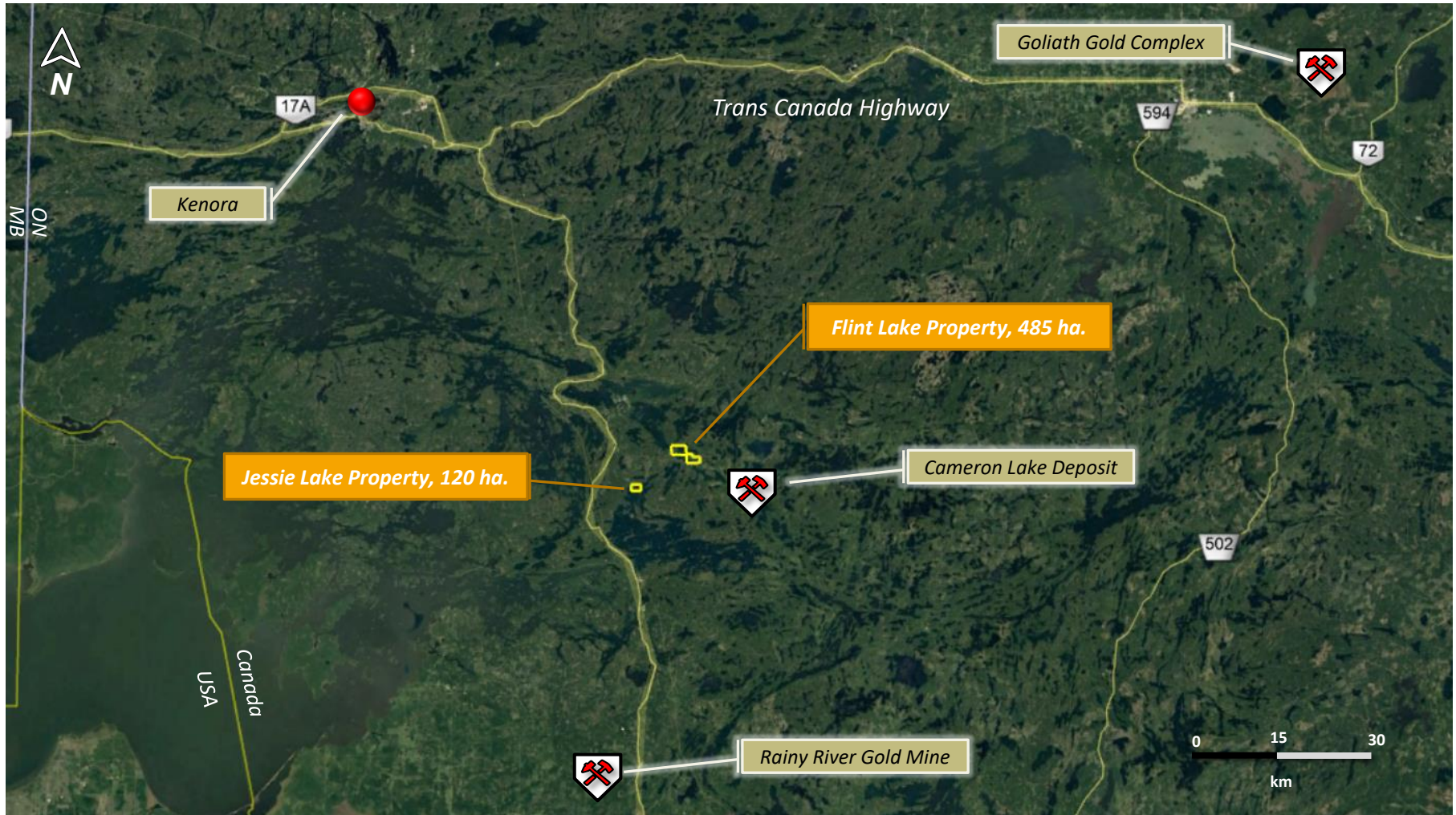
# Northwestern Ontario Precious Metals



- The Flint Lake Property is situated within the Wabigoon Subprovince which has been recently recognized for its metal endowment hosting the producing Rainy River Gold Mine with 4.6M oz. Au and 12.3M oz. Ag (New Gold), the Cameron Lake Deposit with 1M oz. Au (First Mining) and the Goliath Gold Complex with 2.56M oz. Au (Treasury Metals).

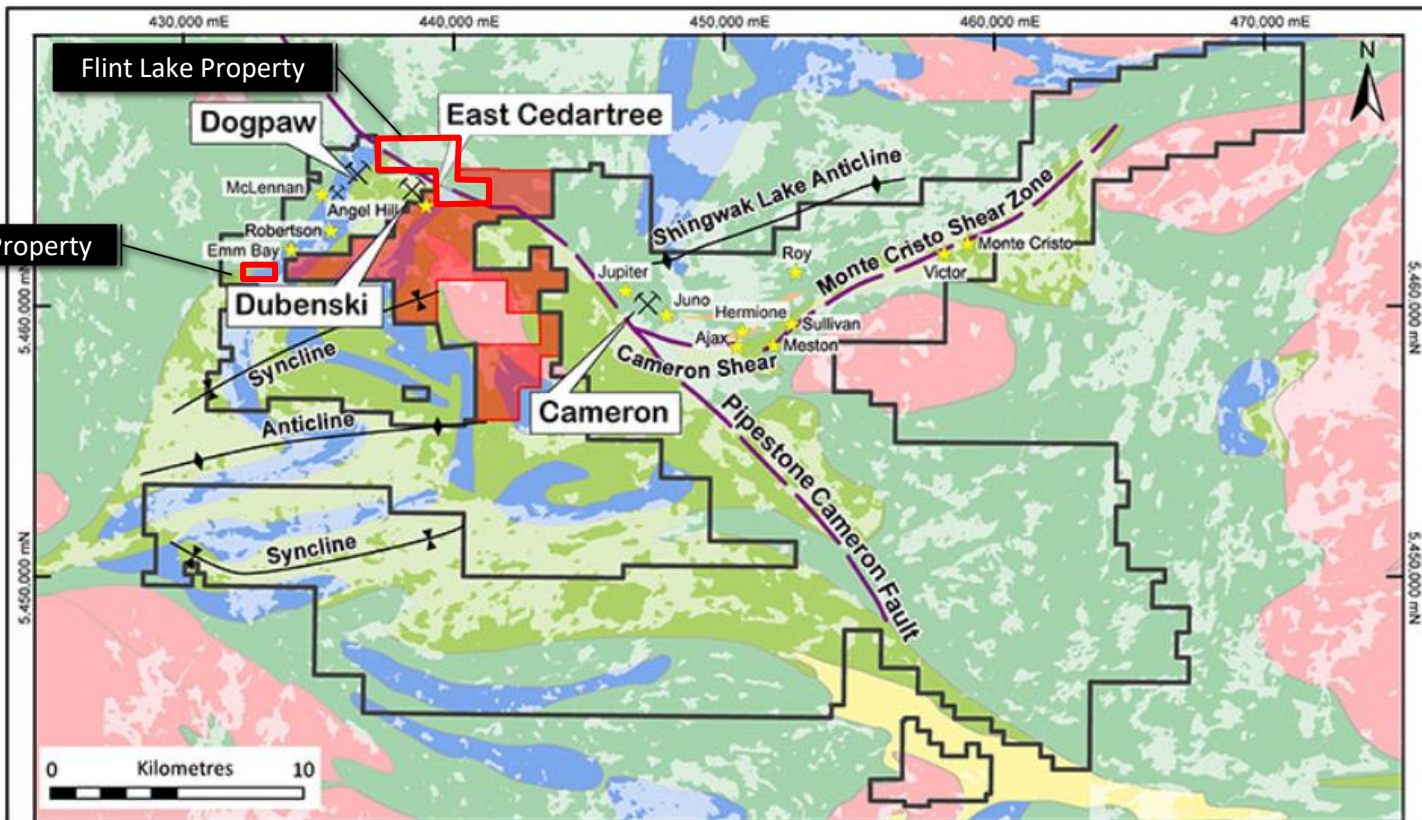
- Precious Metal Occurrences of Ontario/Quebec

# Regional Location and Access



➤ Good access via logging roads and water ways

# Regional Geology




Jessie Lake Property



Legend	
<span style="color: blue;">■</span> Mafic & Ultramafic Intrusives	Historical Development
<span style="color: pink;">■</span> Felsic Intrusives	Gold Occurrence
<span style="color: green;">■</span> Intermediate Felsic Volcanics	Cameron Gold Project
<span style="color: lightgreen;">■</span> Mafic Volcanics	East Cedartree Claims
<span style="color: yellow;">■</span> Metasediments	Lake
Shear Zone	

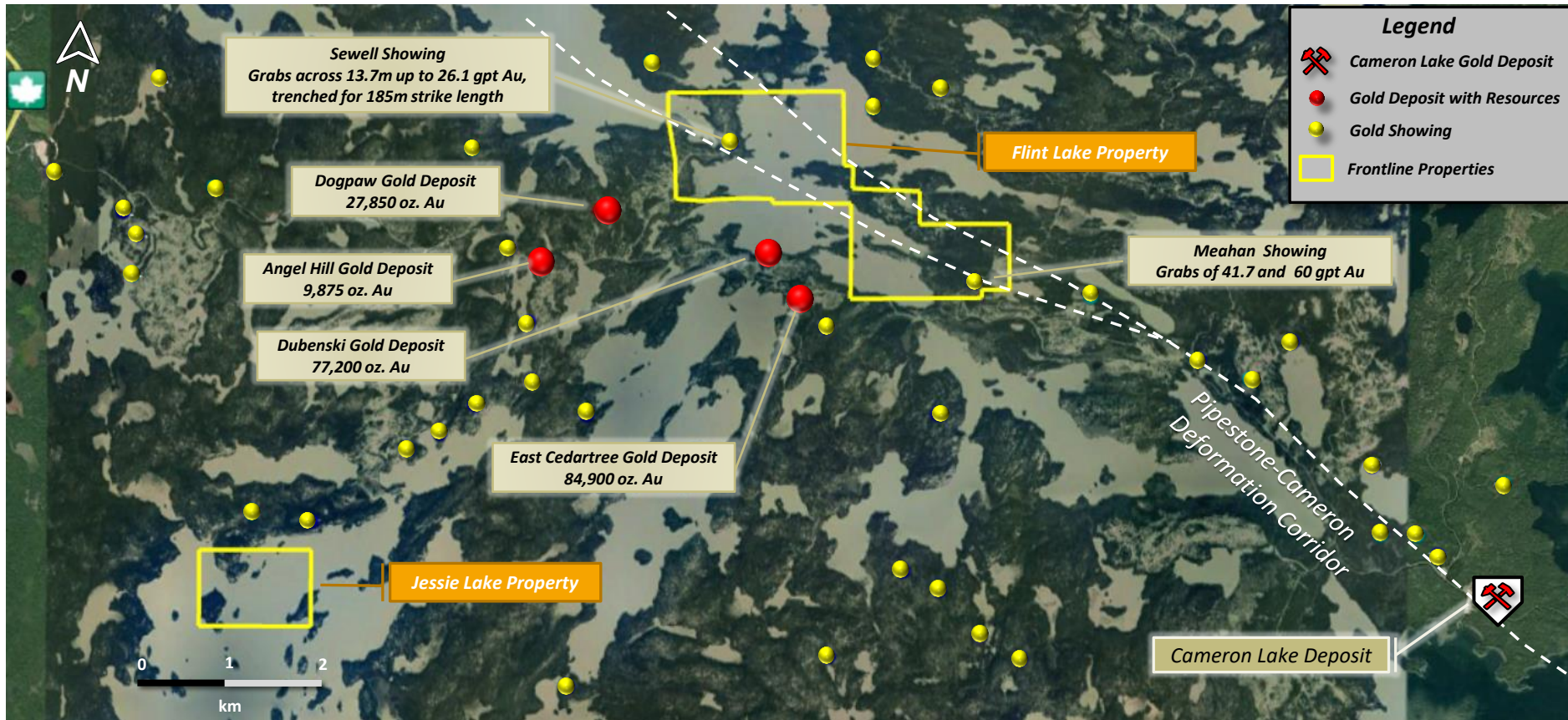
\* Ontario Geological Survey 2011. 1:250,000 scale bedrock geology of Ontario Miscellaneous Release - Data 126 - Revision 1



**Camron Gold Project  
Regional Geology**  
Kenora Mining Division, Ontario

Projection: NAD83 Zone 15      December 2020

# Gold Deposits and Showings of the Flint Lake Area



- The Flint Lake area is 'littered' with registered gold showings with several nearby gold deposits with resources.