



*Granite Ridge
Property Overview*

Red Lake, Ontario

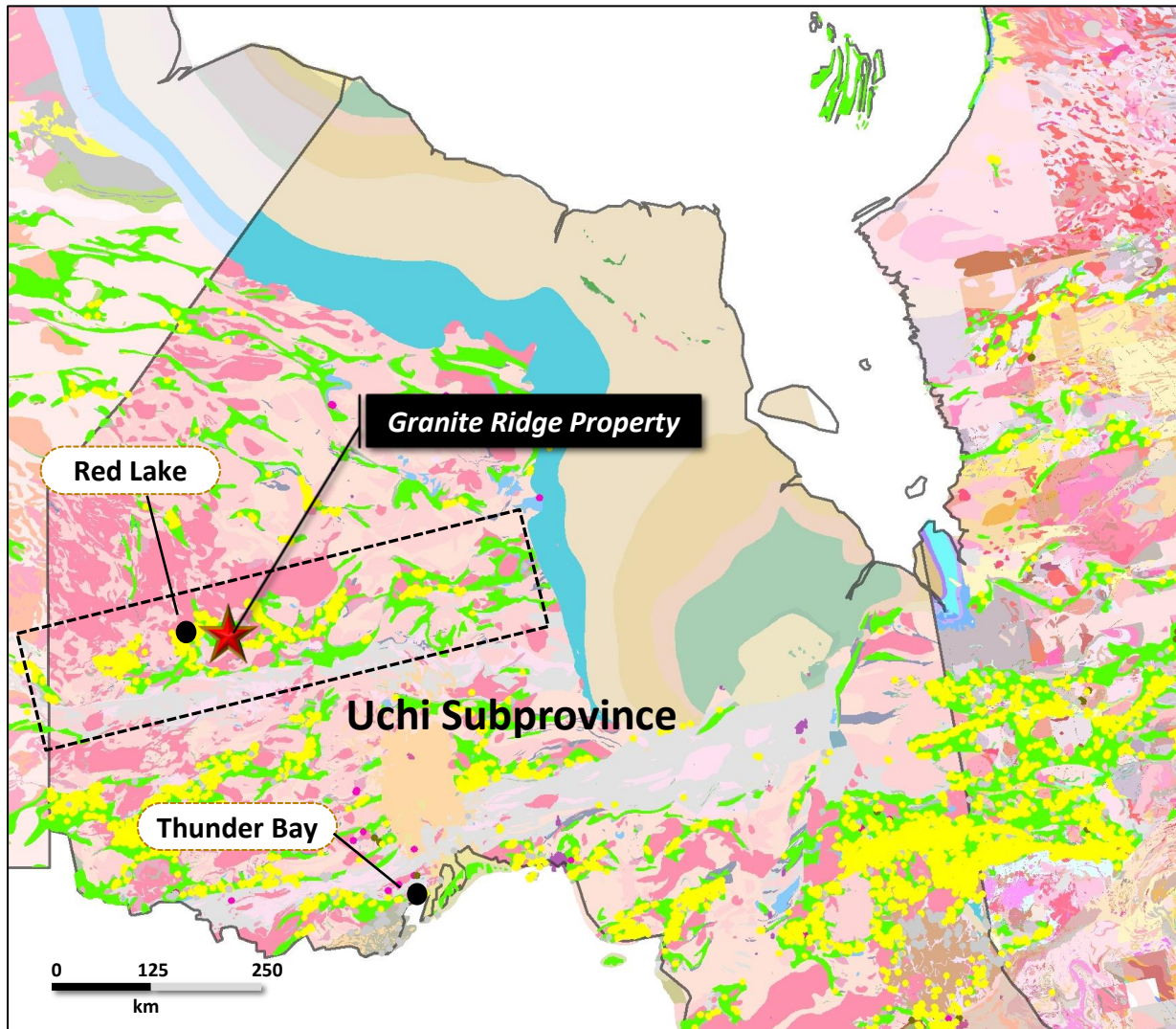
Property Summary

- The Granite Ridge Property consists of 49 claim cells totaling 995 hectares.
- The Property is strategically located 45 km southeast of Red Lake and 28 km north of Ear Falls, Ontario. All-weather roads and logging roads provide excellent access.
- The claims are contained within the Confederation Greenstone Belt which hosts the Great Bear Resources newly discovered Dixie Gold Project.
- The Granite Ridge Property is new gold discovery. Two samples from reconnaissance sampling in April 2021 assayed 45 and 170 ppb gold.
- The Granite Ridge discovery represents at least two gold-bearing shear zones hosted within the property.


Regional Location



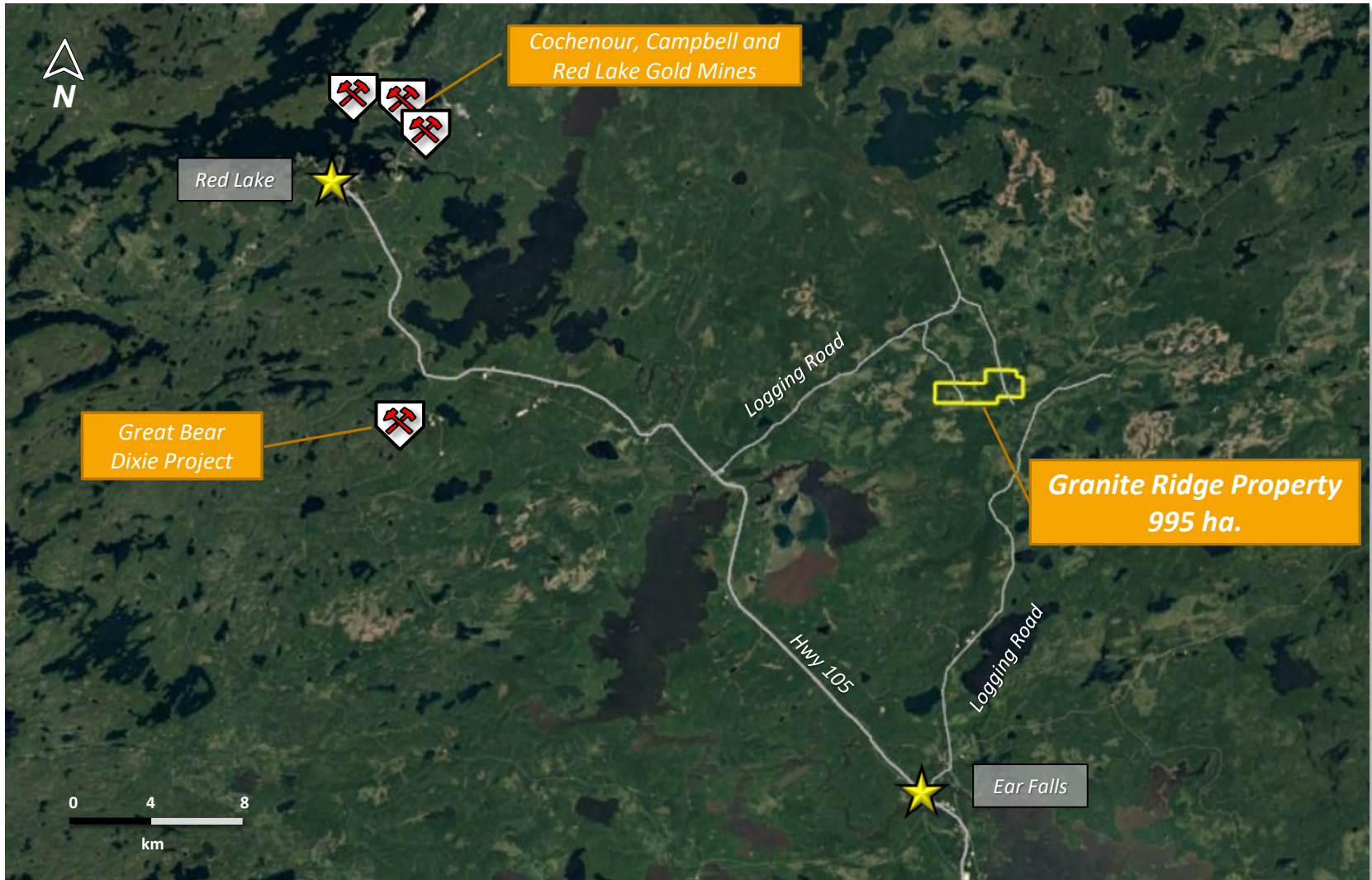
Metal Occurrences of the Superior Province



➤ The Granite Ridge Property is situated within the Uchi Subprovince, known for its prolific metal endowment. The Uchi has produced more metal by square kilometer greenstone lithologies than any other greenstone belt in the Superior Province.

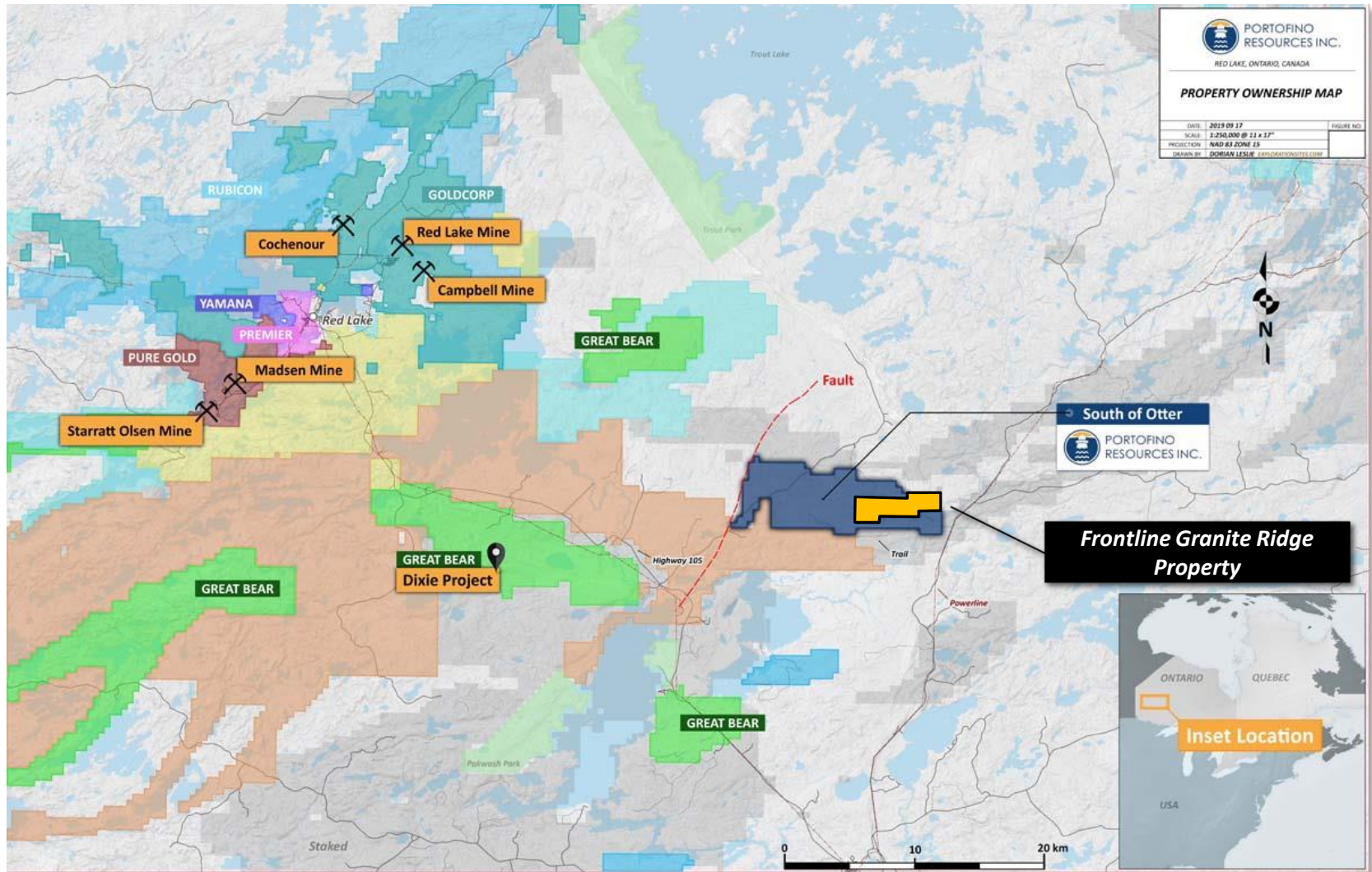
 Precious Metal Occurrences of Ontario/Quebec

Regional Location and Access

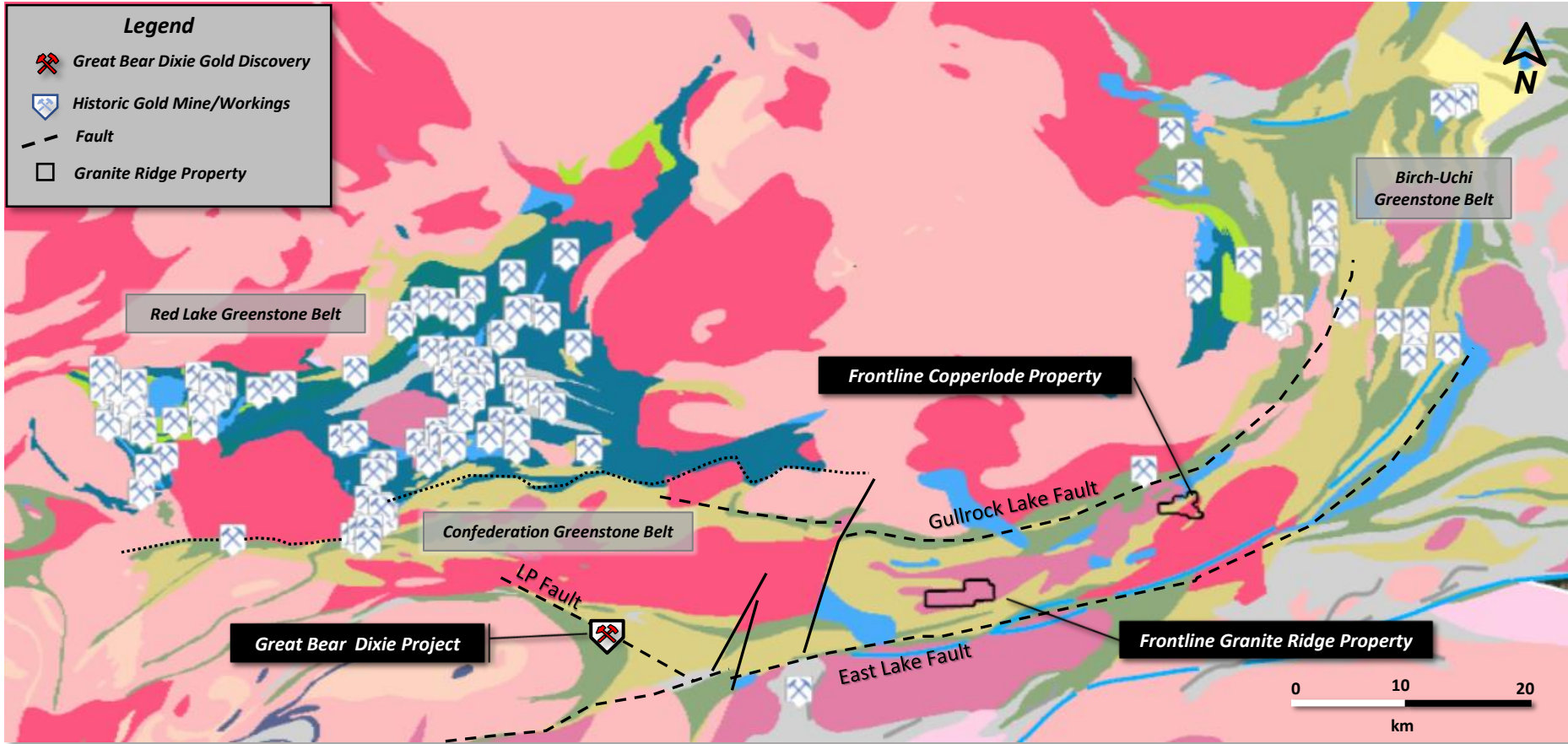


- Excellent all-season road access, logging roads, power lines and nearby infrastructure

Regional Property Holders

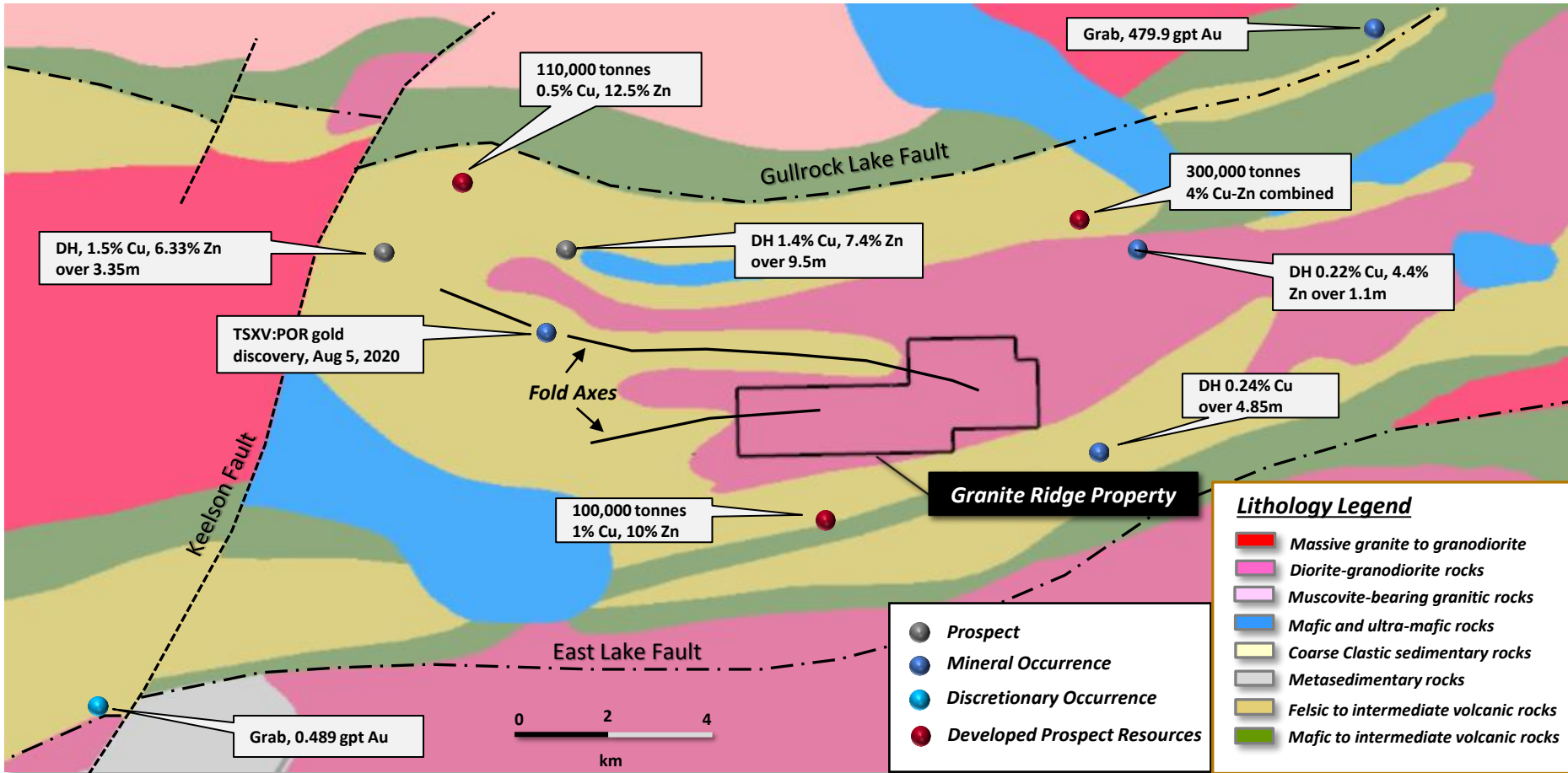


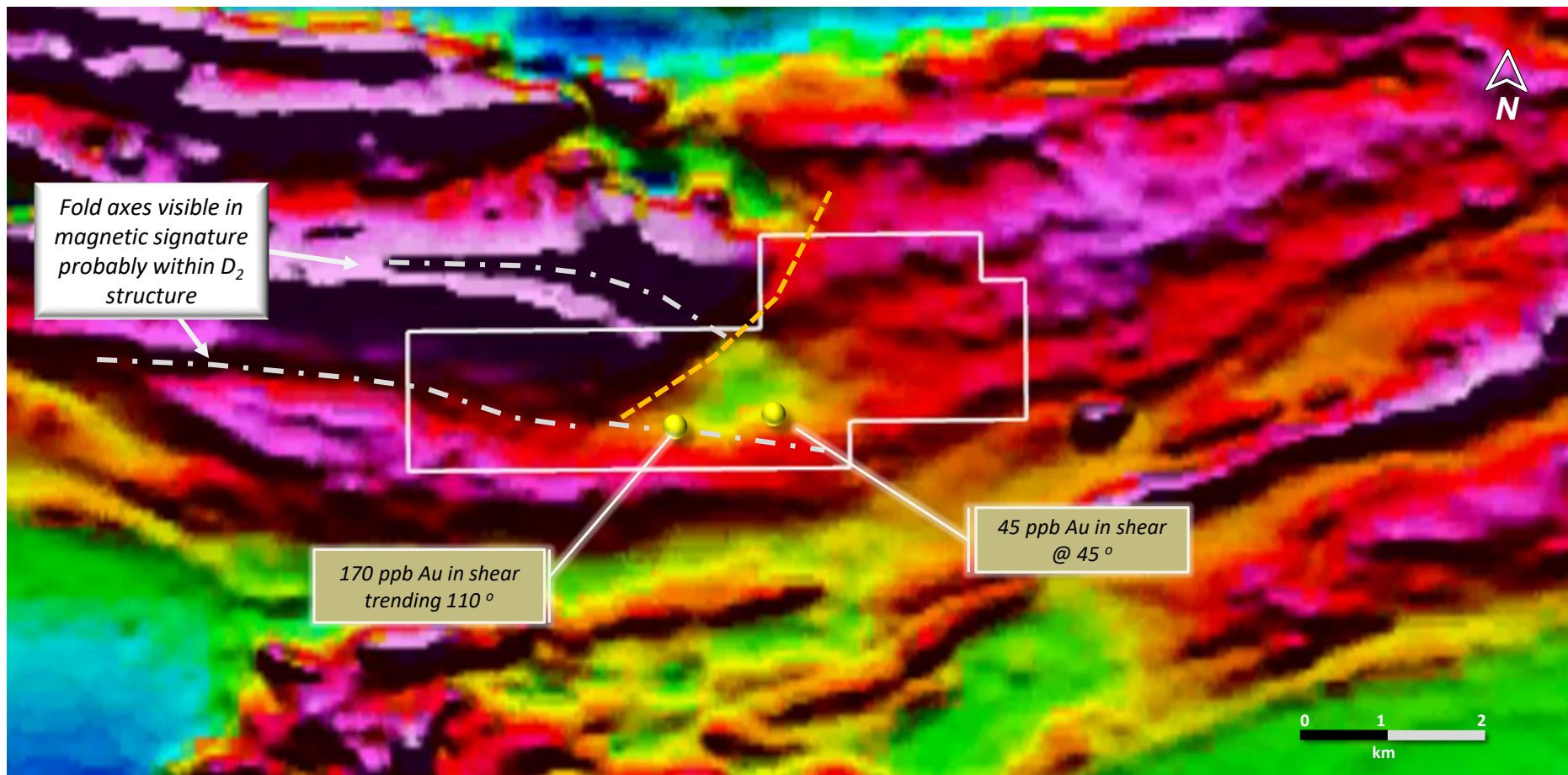
Red Lake District Geology and Mineral Deposits



- The Granite Ridge property is located within the Confederation Greenstone Belt of the Uchi Subprovince.

Regional Geology and Mineral Occurrences





- Granite Ridge is a new gold discovery with anomalous gold intimately associated with shearing and alteration in a granite host.

Granite Ridge Gold Discovery



- Sample A779266 with 170ppb Au in strongly sericitic and silicified schist.
- Shear zone trending azimuth 110 degrees.
- Host rock is sheared granite.
- Subordinate cm scale quartz veining that shows evidence of boudinages and fragmentation.