



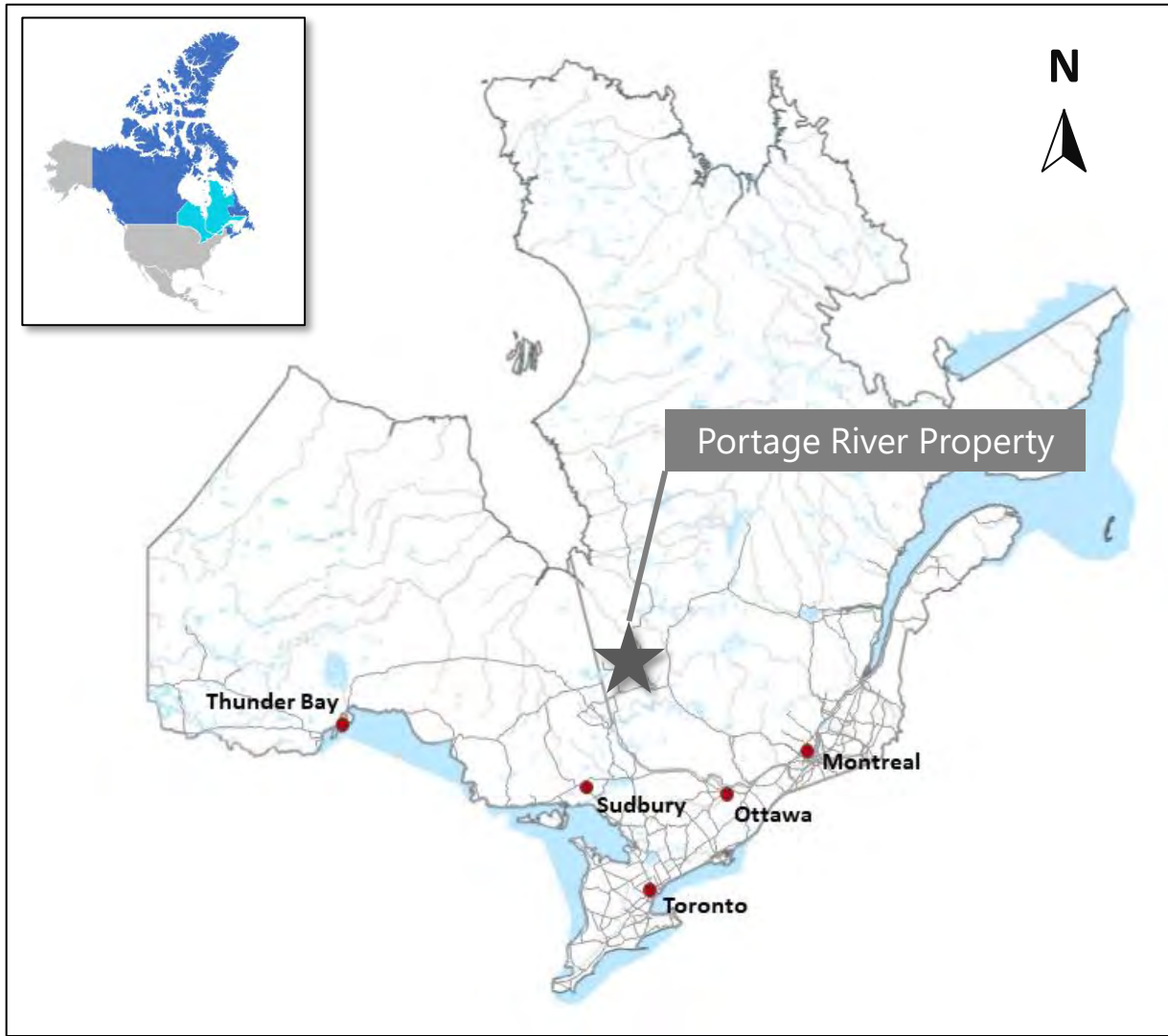
*Portage River  
Property Overview*

*La Sarre, Quebec*

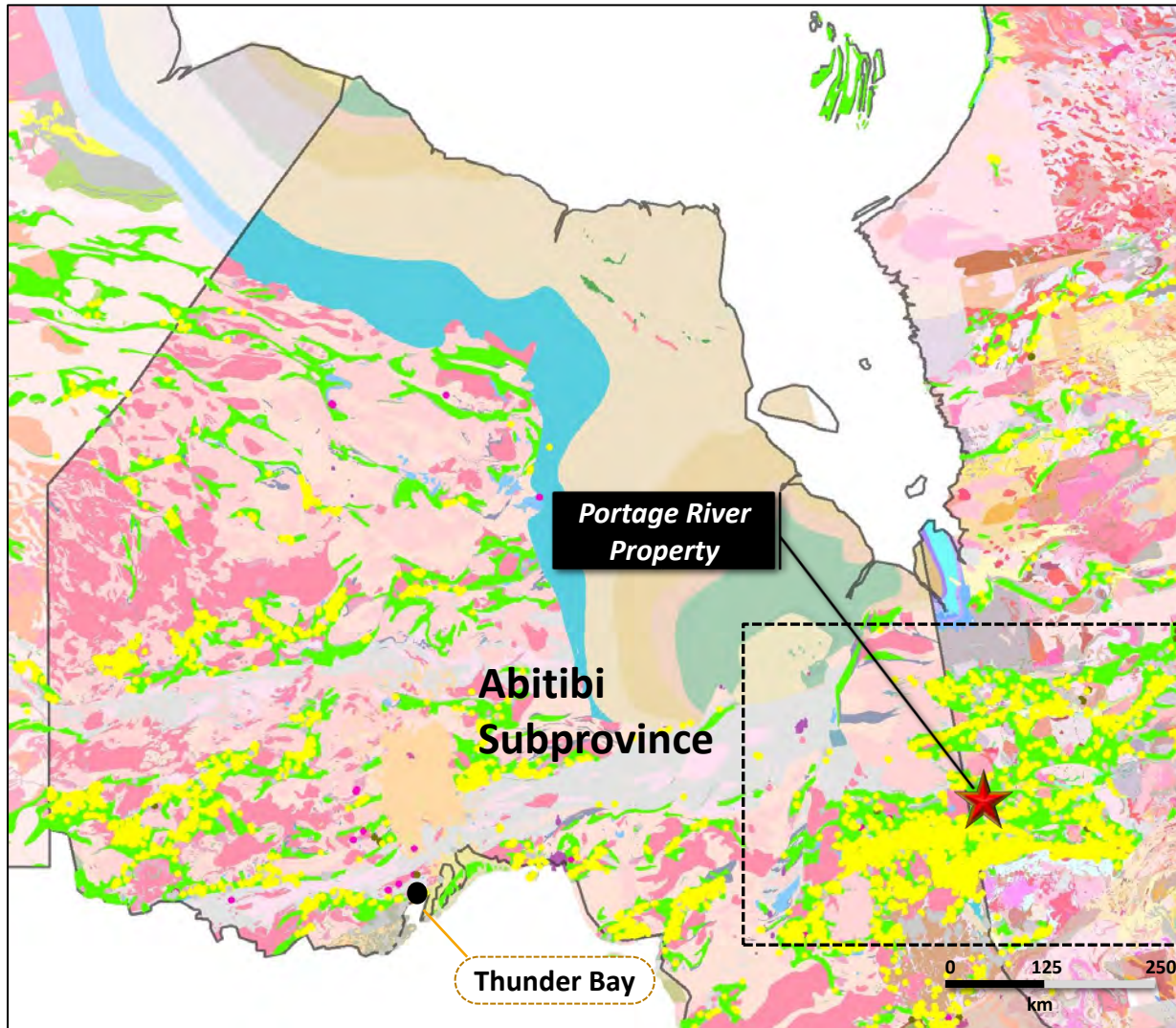
# Property Summary

- The Portage River Property Property consists of 28 claims totaling 1,567 hectares
- The property is strategically located just north of La Sarre, Quebec and is serviced by active roads with nearby power and natural gas lines.
- The property is hosted within the Abitibi Subprovince recognized around the world for its metal endowment
- Southeast trending structures in the area are important hosts and pathways for gold bearing fluids. The AMEX Perron Property (TSXV:AMX) reporting impressive gold intersections lies along a southeast trending structure. The Portage River Property is hosted along a parallel structure called the North Chicobi Fault.
- The nearby former producing Duvan Mine on adjacent claims hosts historic non-compliant resources of 101,000 tons at 2.5% Cu.
- Excellent location, nearby infrastructure and access

# Regional Location



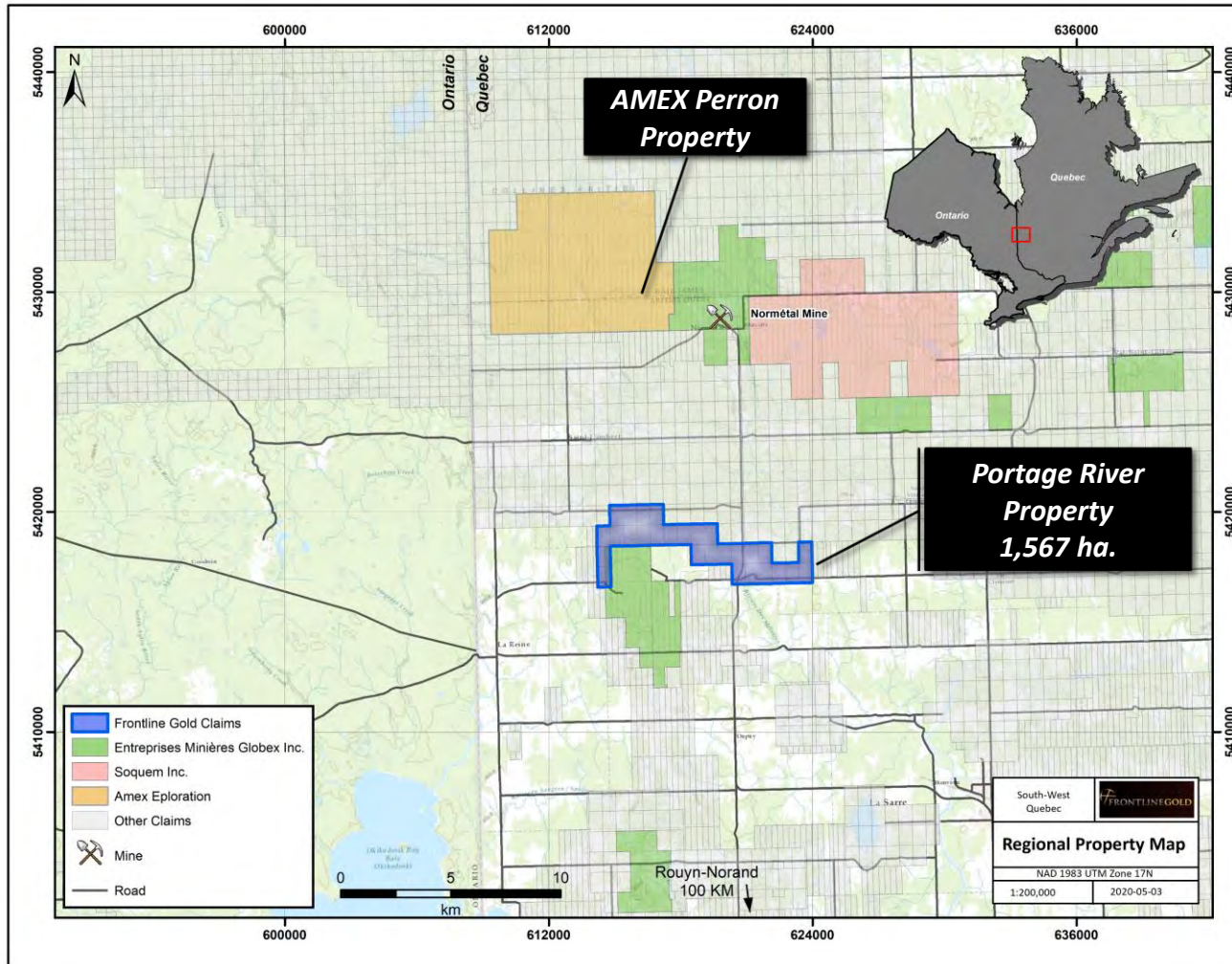
# Eastern Quebec Precious Metals



- The Portage River Property is situated within the Abitibi Subprovince which is prolifically known for its metal endowment. It has been estimated the Abitibi Subprovince has produced over 200 million ounces of gold and 400,000,000 million tonnes of base metal ore.

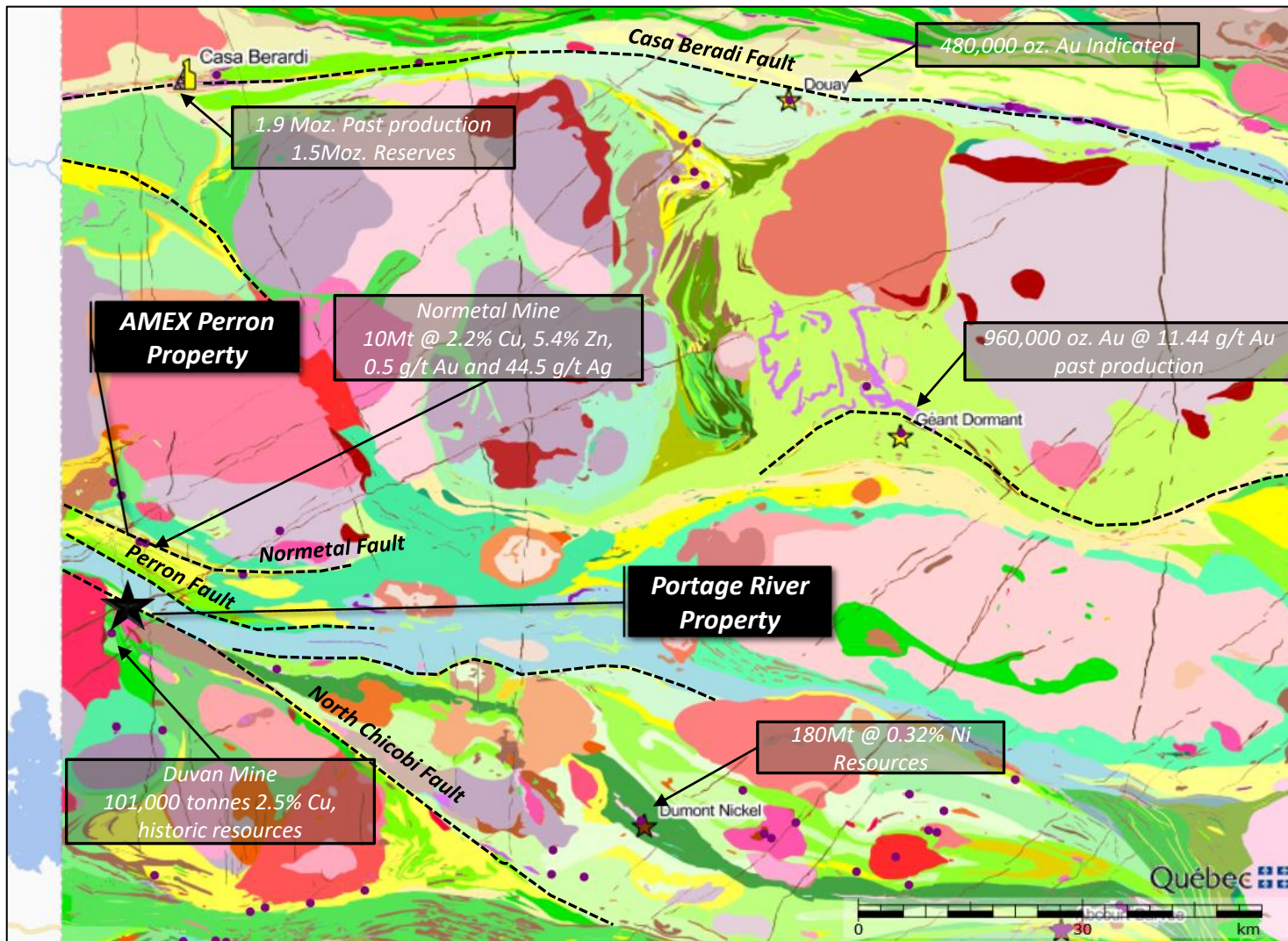
- Precious Metal Occurrences of Ontario/Quebec

# Regional Location, Access and Claim Fabric

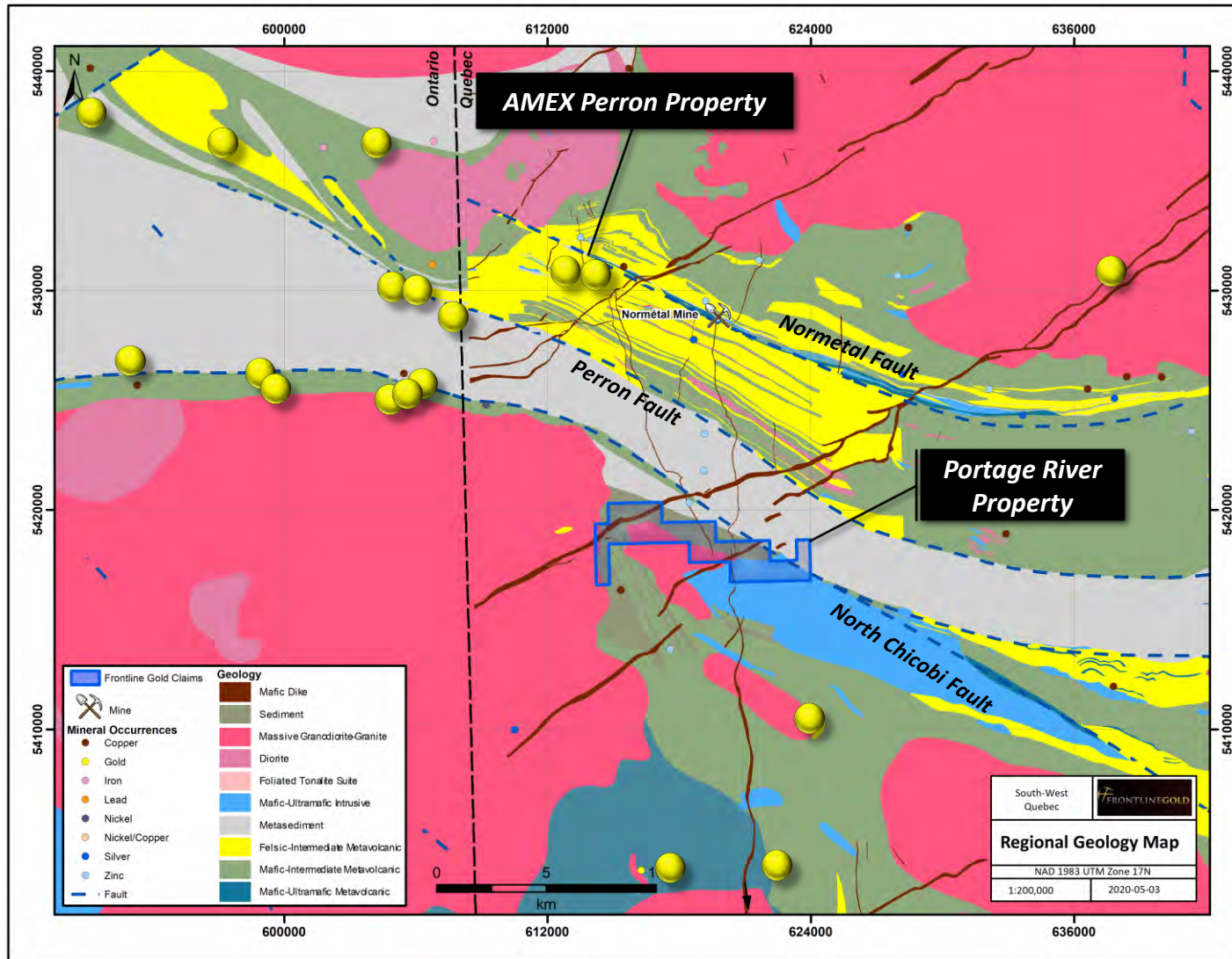


➤ Excellent road access and nearby infrastructure

# Regional Geology, Current and Historic Deposits

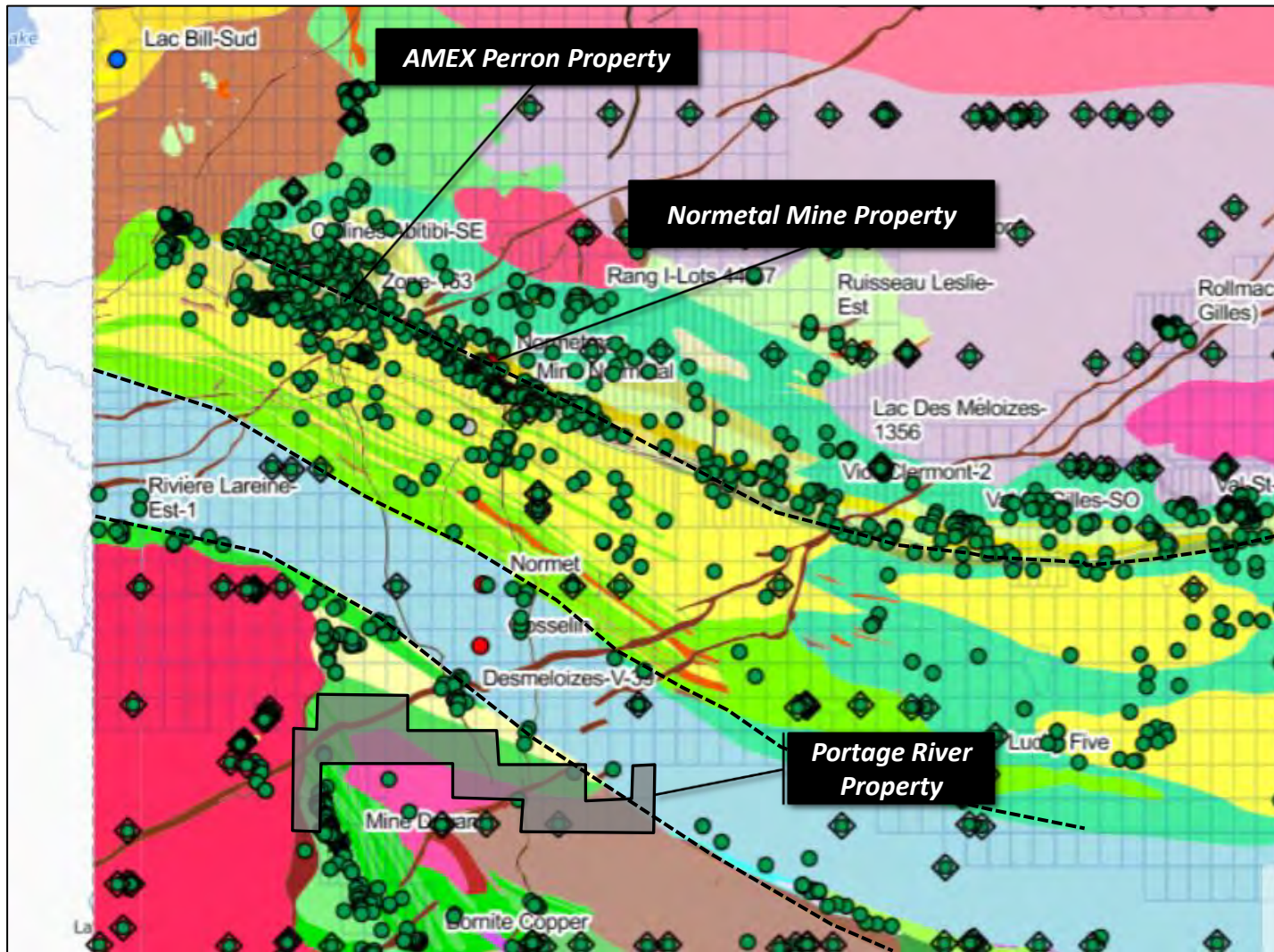


# Gold Mineral Occurrences



The Portage River Property is hosted along the North Chicobi Fault. Southeast trending structures in this area of the Abitibi Subprovince are important hosts for gold mineralization.

# Historical Drilling



There has been very little historical drilling on the Portage River Property.