

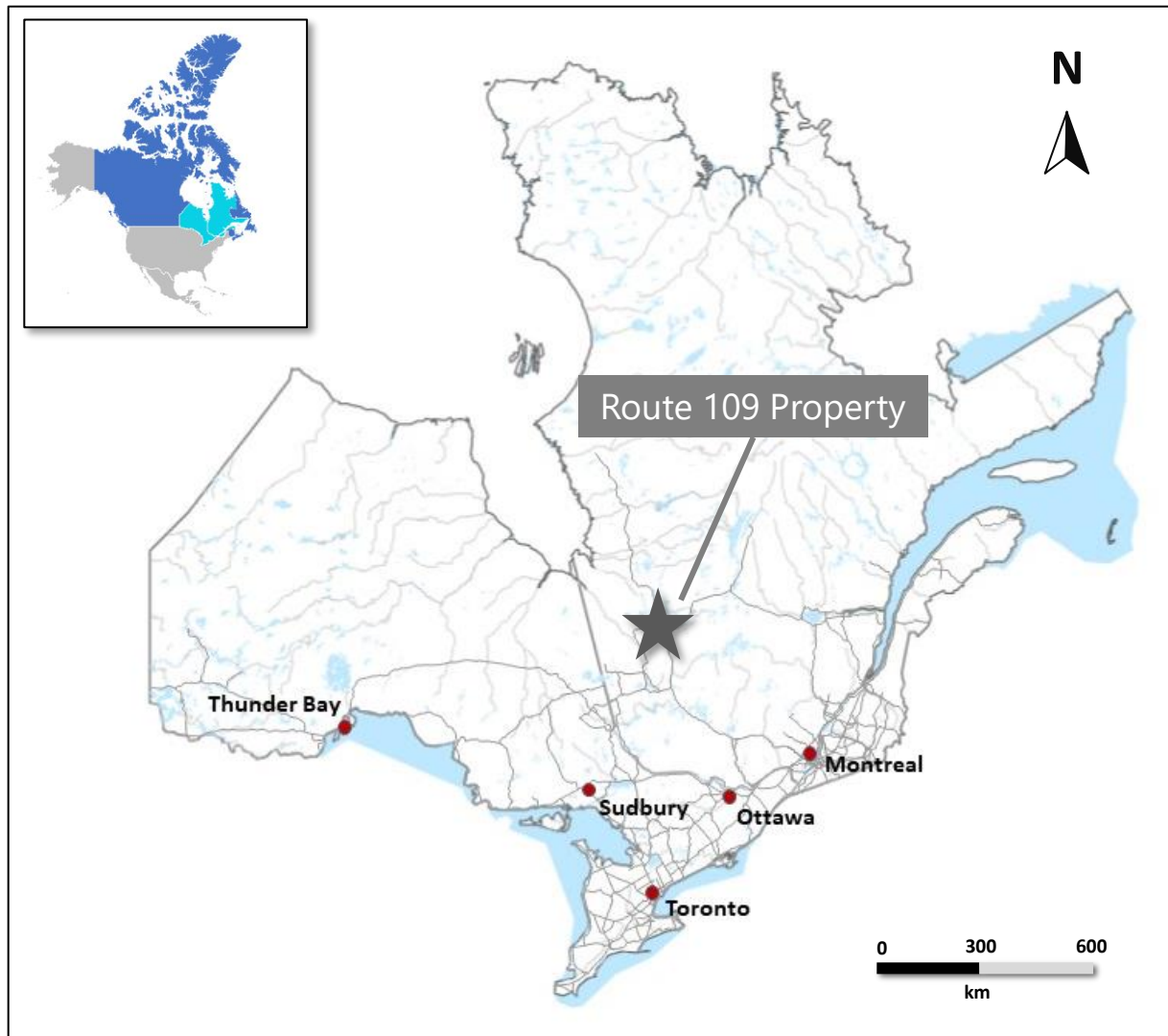


Route 109 Property Overview

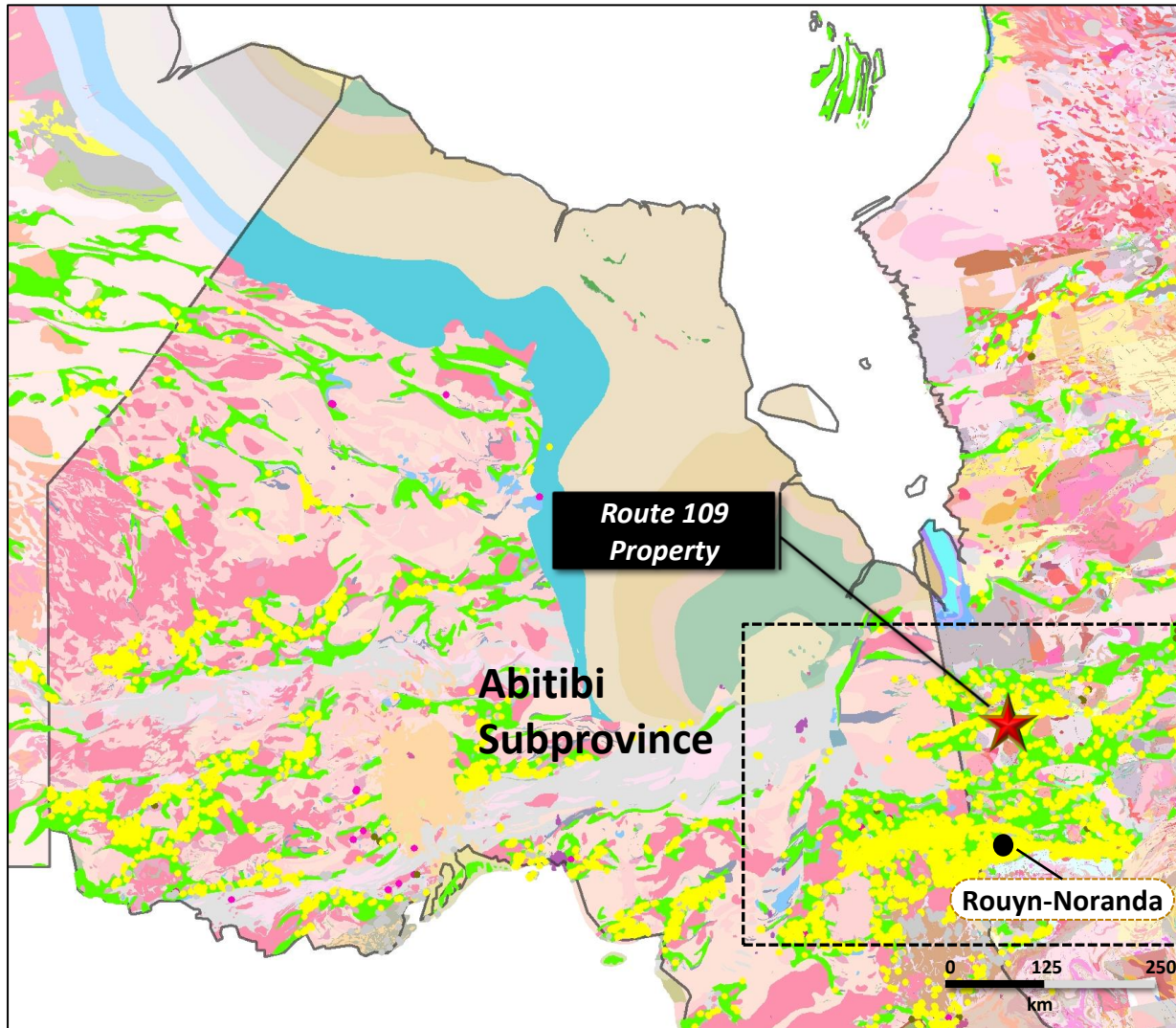
Matagami, Quebec

- The Route 109 Property consists of 100 mining claims in the Province of Quebec covering 5,588 hectares
- Aptly named, the Route 109 Property straddles Highway 109 which leads to the mining camp of Matagami providing excellent access and infrastructure
- The Property lies in the same volcanic-sedimentary rock package as the Casa Beradi Deposit 75km to the west
- The same belt also hosts the Douay Gold Project owned by Maple Gold Mines, The Vezza Gold Project currently operated by Nottaway Resources and the N2 Gold Project under Wallbridge Mining. These three gold projects lie in close proximity to the property.
- Numerous gold occurrences and drill hole intersections are located just north of the property boundary along linear east-west magnetic signatures. The Route 109 property has the same magnetic signatures, similar rocks, yet has received little drilling.

Regional Location



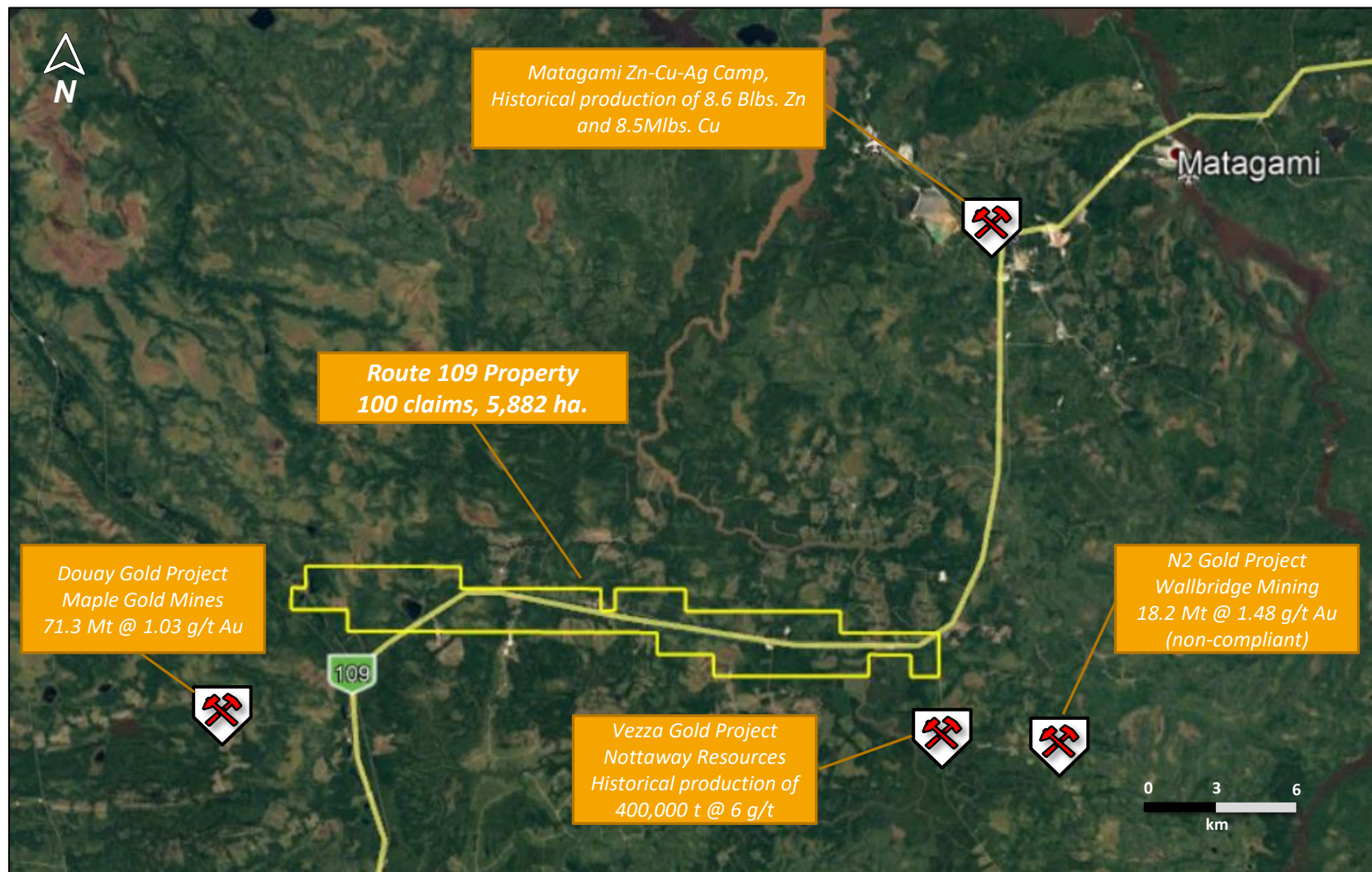
Eastern Quebec Precious Metals



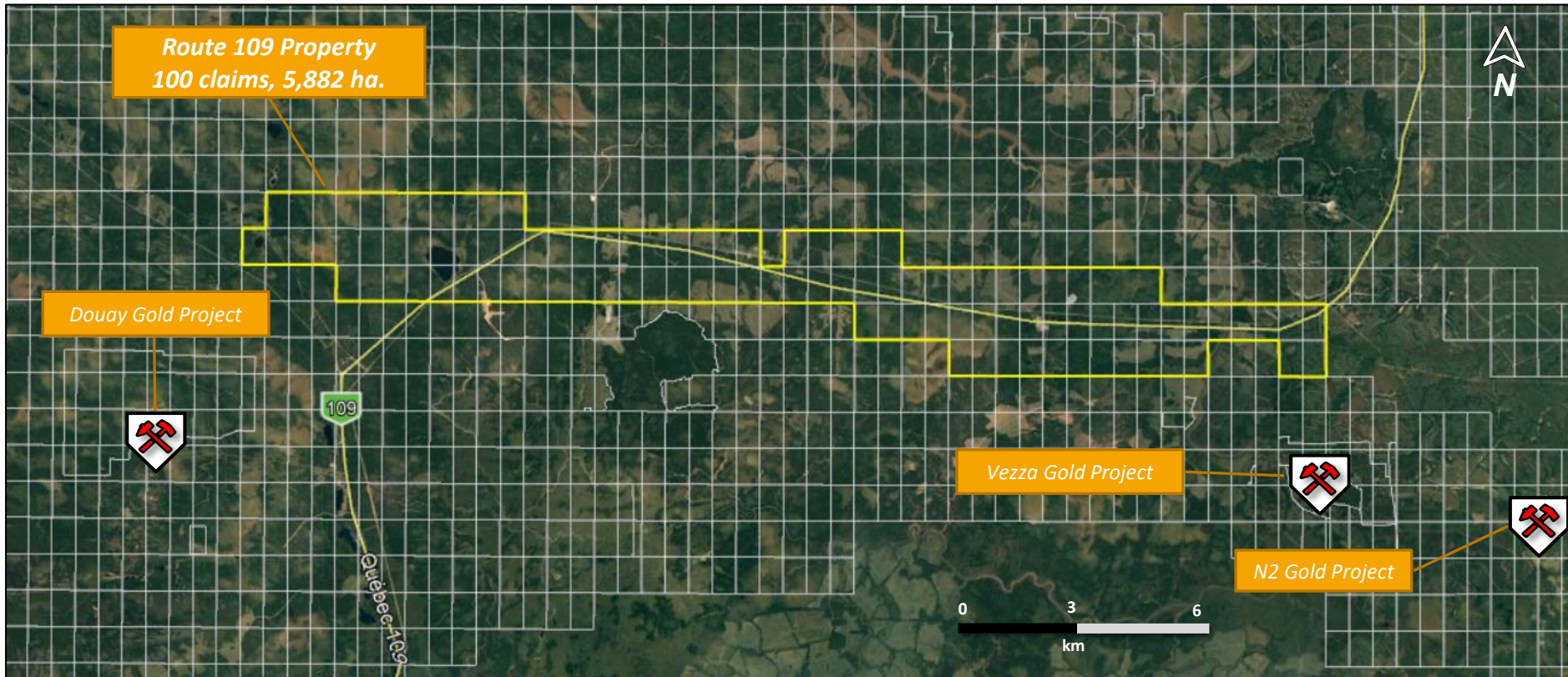
- The Route 190 Property is situated within the Abitibi Subprovince which is prolifically known for its metal endowment. It has been estimated the Abitibi Subprovince has produced over 200 million ounces of gold and 400,000,000 million tonnes of base metal ore.

- Precious Metal Occurrences of Ontario/Quebec

Regional Location and Access

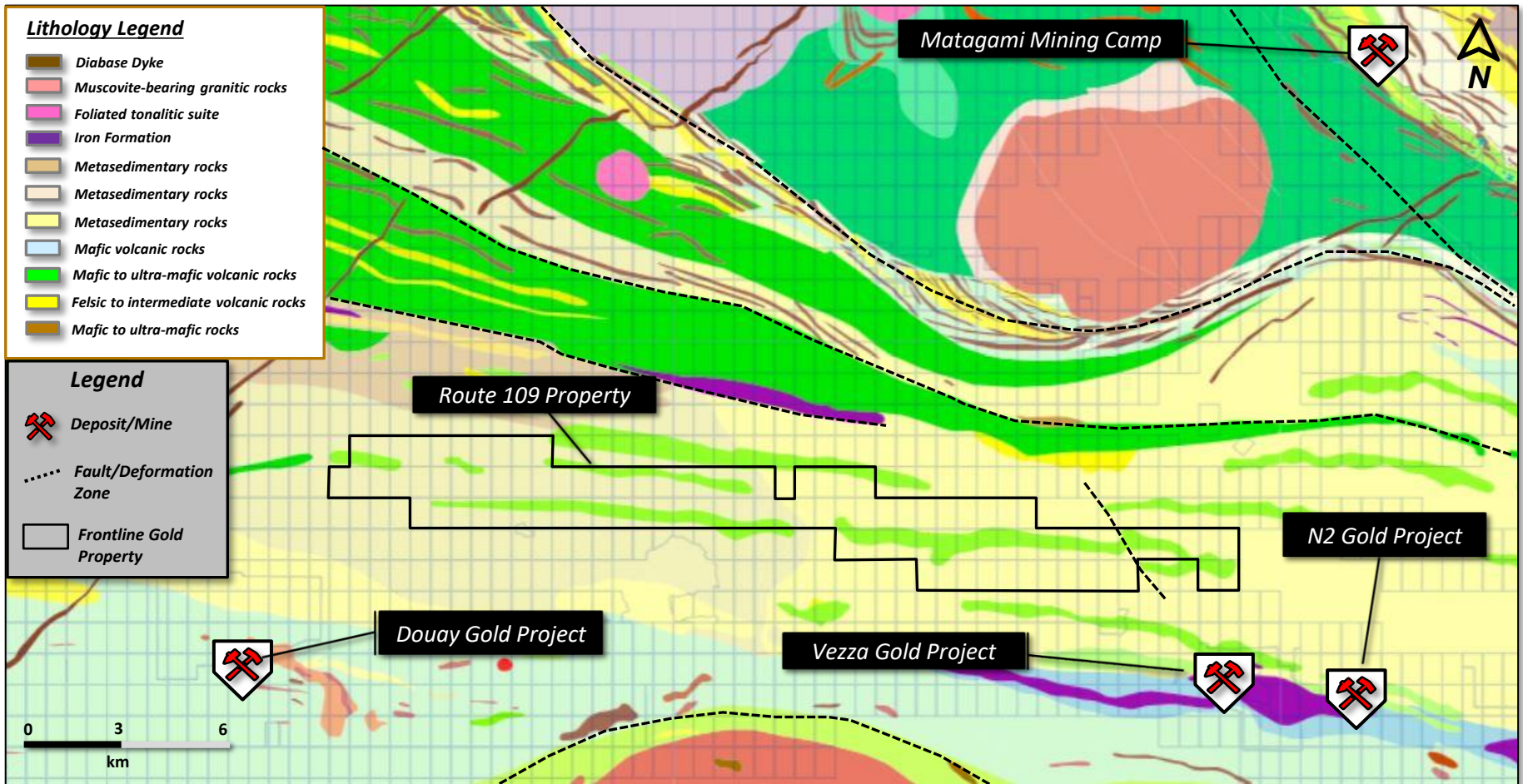


Claim Fabric



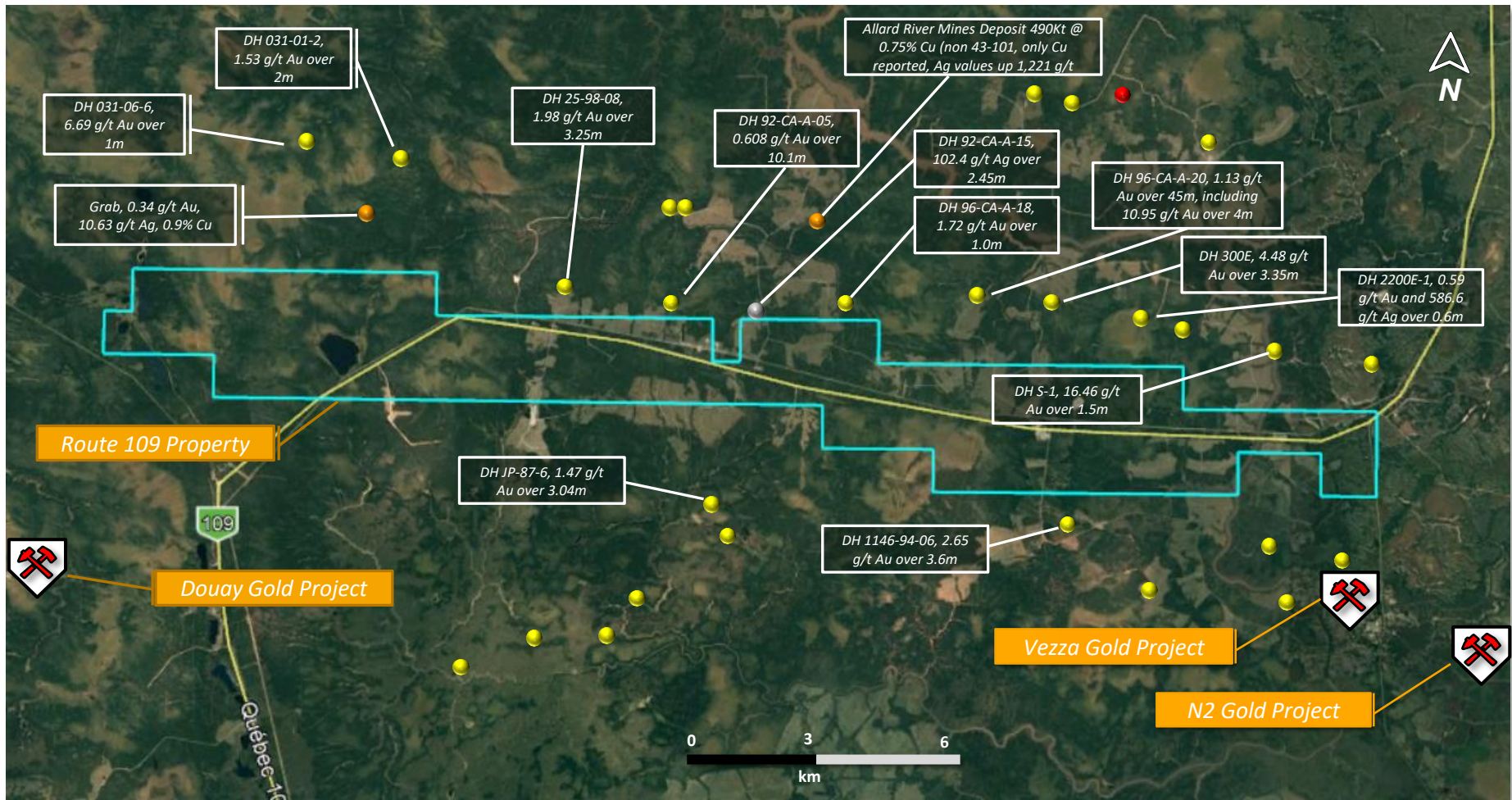
- Excellent road access and nearby infrastructure

Regional Geology



- The Route 109 Property lies within a sequence of mafic volcanic and metasediment rocks. Iron formation and Timaskaming-type conglomerates have also been noted which are key to mineralization in the belt.

Local Mineral Occurrences



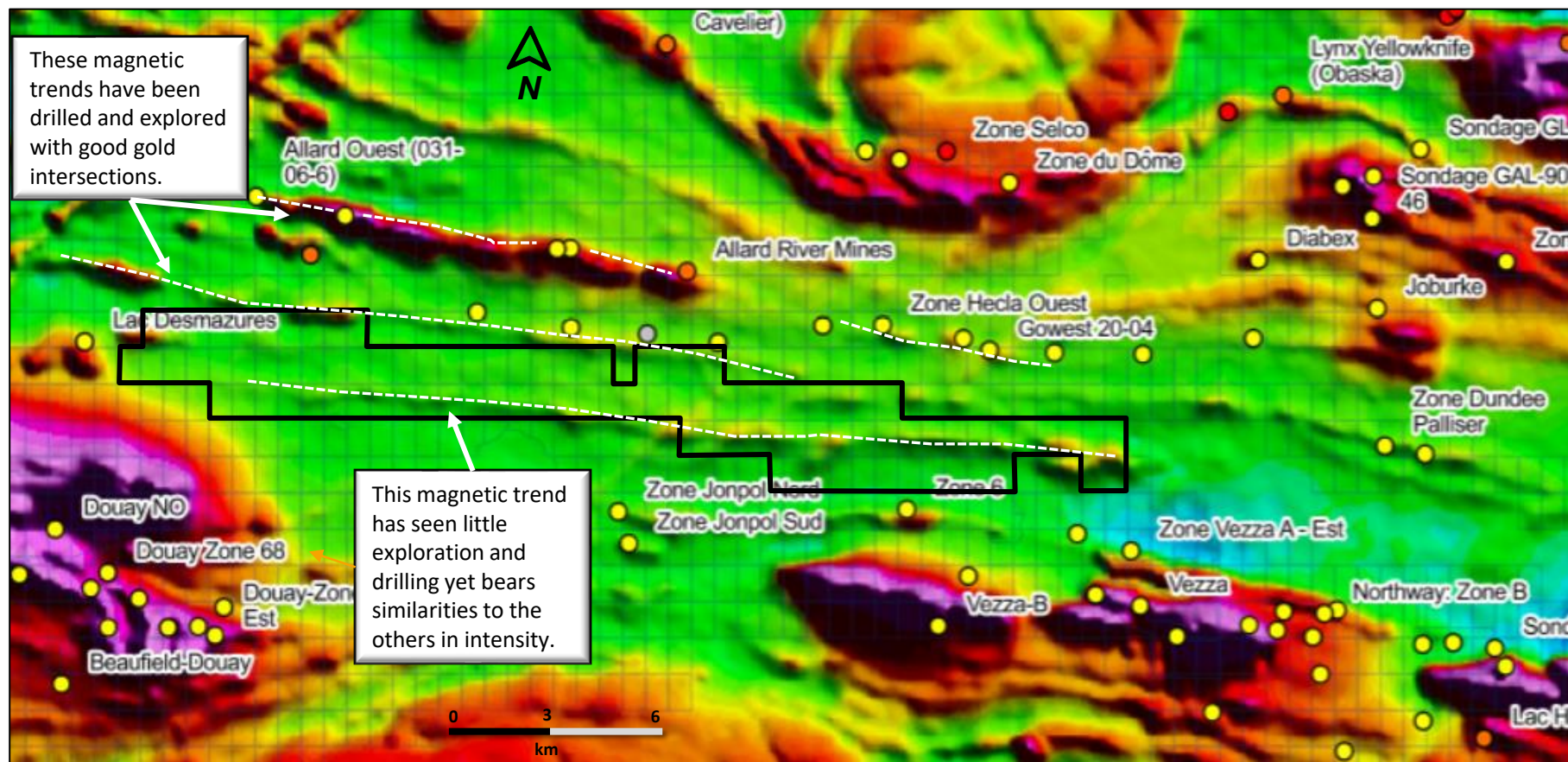
- Numerous gold +/- silver occurrences and drill intersections are very proximally located to the Route 109 Property

Historical Drilling



- The Route 109 Property has seen little historical drilling in a similar geological environment where significant intersections were encountered along the northern boundary

Total Residual Magnetics



- Gold mineralization in the Douay-Vezza Gold belt are strongly associated with magnetic trends and signatures